

FIBERWORKS - THE FLYING NEEDLE

April 2011

319-352-5464

Vol. 18 No. 3

Out of local area use 1-800-307-4103, E-mail info@myfiberworks.com
Hours: Tue - Fri 10:00 - 6:00 (Thurs till 8:00), Sat 9:00 - 5:00 www.myfiberworks.com



Love to Shop Hop Trail is here:

April 7, 8 & 9 visit all seven stores to get your name in drawings for \$50.00 gift certificates and other quilt oriented door prizes. Joining Fiberworks is Moose Patch, also in Waverly, General Store Conrad, Jen's Needleworks Aplington, Crazy to Quilt and Lulijunes Cedar Falls, and

Dralles in Greene. Hours are Thurs from 9-8, Fri and Sat from 9-5. Get your card at the first stop and have it stamped at each location (with a \$5 minimum purchase) and get your fabric piece for the mystery pattern which will be given to you at the last shop when you turn in your card. Fill up your cars with friends and get on the trail. Oh, and 20% off all fabric cuts 1/4 yard and more and quilting books and patterns. Stock up at this great price.

Sales of the month for May & June: Knit and crochet supplies will be 15% off May 17th - 21st and beading supplies will be 15% off June 14th through 18th. Add to your stash at a discount!



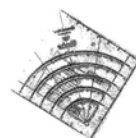
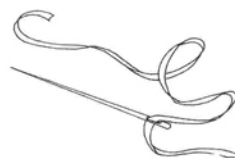
The Online Needlework Show: What a great time to look at lots of different designers' offerings in the comfort of your own home at whatever time you want and maybe even in your jammies. Click on general viewing at www.needleworkshow.com and make a list.

This is their 10th anniversary so look for door prizes you could win. If you see anything you just gotta have, let me know by noon on Monday, April 18th so I can compile orders. Show opens on Thursday afternoon, April 14th, and goes until Sunday night, April 17th.

New Event in Waverly April 14th: Ladies Night Out will be held on Thursday, 4-14-11, from 5-9. There will be gift bags for the first 50 in line for registration at 107 E Bremer (just across the street from us) and specials up and down the street. We will offer a discount of 15% off one regular priced item of your choice.

Free Designs: Thanks to Blue Ribbon Designs and 4 My Boys for sharing the reproducible designs in this newsletter.

Patterns on SALE: Since I finished doing inventory, I have 3 new boxes of patterns that are marked 1/2 off! Quilting, knit, crochet, cross stitch, hardanger, canvas all included. Take several home with you,



TECHNIQUE TIP: Rulers provide ease in cutting.

Just as rotary cutters have made cutting strips of fabric much easier than using scissors, so have specialized rulers used with them flourished. There are several different brands from which to choose. Some have a non slip surface on the back so the ruler doesn't scoot around while you are cutting. There are thin rough pads that can be stuck on a ruler that does not have a non-slip surface to accomplish the same thing. There are also suction cup handles that can be used to help get a good grip on the ruler. It is imperative to keep the ruler solidly against the fabric when cutting so the pressure of the cutter running along the edge doesn't shift the ruler. You will want a rectangle ruler for general use that is long enough to do one cut across the width of fabric. I use a 6" x 24" size. Many sizes of square rulers are available. These come either even inch or with 1/2" added to include 1/4" seam allowance all around the square. These are great if you need to square up a pieced block so that all edges are equal. Triangle shapes come in 45, 60, 90 degrees and make star points a breeze. There are wedge rulers to help make a pieced circle and hexagon guides for Grandma's Flower Garden shapes. The circle cutter rulers have slots to cut an arc so if you fold a piece of fabric into quarters and make one curved cut you get a circle. Flying Geese rulers help to get those birds all lined up in correct formation. If you are fussy cutting a print, rulers are invaluable as you can see through the plastic to see just what part of the print will be in the cut area. The newest shape ruler we've gotten in is called a House Ruler which says it cuts every shape under the roof: half-square triangles, quarter-square triangles, trapezoids, parallelograms, diamonds, house and barn shapes. There is usually a use guide that comes with the ruler so you can see how to line up the markings on the ruler to get the shape and size you need. Other shapes include diamonds, curved corners, Dresden Plate, Drunkards Path, miniature sets, wavy edge, scallop edge to name a few. Check not only the size but the markings on the ruler to see if it has what you need and what size rotary cutter can be used with it. Also make sure you can see the markings against your fabric - most are black, some are highlighted with a color. Invest in a ruler for your specific project to make your cutting quicker and more accurate.



WHAT'S NEW! -

Kits: Sweetheart Tree - M'Lady's and Irish Quadrielles, Spring Blossoms Welcome, V is for Violets, Berries & Shortcake Biscornu; Lizzie Kate - Peep, Flora McSample Heart and Stitch Lesson Samplers; Bent Creek - Ewe Teach and Sweet Home Mantle part 1 of 3; Heart in Hand - 2011 Collector's Heart; Spool: Spring issue. **Fabric:** RJR - Jinny Beyer's Sophia and Coraline (great purple and blues), Thimbleberries Border Blast 2nd quarter bolts, Sue Marsh Pound Hounds; Henry Glass - 30's prints from Feed Sack and Storybook VIII. **Other:** Fairway - new stamped designs in pillowcases, runners, and quilt blocks; Gentle Art - Sampler Threads new colors, Weeks Dye Works floss new colors; ivory treasure box; Just Nan, new Charm Pins will be here shortly.

QUILTING: **Bear Paw Productions:** O Holy Night; **Bobbi G Designs:** Birdhouse Inspiration, Butterfly Babies.

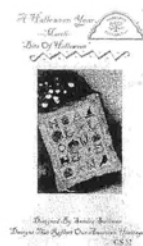
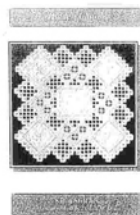
CROSS STITCH: **Jeannette Douglas:** Royalty ABC Sampler and Accessories to match (very elegant), Quaker Stitches, Thistle Lavender Bag, True Owl; **Artocy Cross Stitch:** Celestial Dragon, Fireman, Deer Crossing, Mare and Foal; **Tams Creations:** Beading Moments 2, Odds & Ends a Round; **Homespun Elegance:** EEK, Bits of Halloween, I Love Winter; **Heart In Hand:** What Makes it Love; **Lizzie Kate:** Forgive Quickly, 100 Years, first 3 Halloween Rules, Spring Alphabet; **Blackbird Designs:** Evergreen Lane, Wild Lilies, Spring Tulips, Dear Friend; **Imaginating:** Light of Life, Stitch & Sew, Counting Sheep; **Keslyn's:** Sherry's Hearts, Delights, My Hand For You; **Myrtle Grace Motifs:** Clarence's Day Out; **La-D-Da:** Twinkle Twinkle, Wed To Thee, Flowery Alphabet; **Erica Michaels:** Home in the Spring, Hope, Welcome Grace, Woman of Valour; **Elizabeth's Designs:** America, New England Wool Works; **Glendon Place:** Eggs Ala Round; **Cross-Eyed Cricket:** Spring, La Mer; **Cross Stitch Wonders:** Pound Hounds, Caterwauling (we have quilting fabric to match both of these); **Little House Needleworks:** Rosey, Hillside Travelers; **Sue Hillis:** Happy Easter, More Pirates; **Stoney Creek:** With This Ring, Snow Angel, Serenity Prayer Lighthouse; **Praiseworthy Stitches:** Seafarer's Valentine; **Blue Ribbon Designs:** Turn The Page, Holiday Helpings; **Ink Circles:** Bite Mes, Here Comes Treble; **Shepherd's Bush:** Irish Heart; **SamSarah:** Farmer's Market Melon, Harried Hare; **Nora Corbett:** Linen and Bead Fairies; **Val's Stuff:** Little Bitty Kitty Quilt Jan-Feb, Mar-Apr; **Sweetheart Tree:** Nantucket Rose, Dragonfly Dreams; **Amy Bruecken:** Stacks of Bees and Butterflies; **Plum Street Samplers:** The Flood; **Rosewood Manor:** Past and Present; **Shakespeare's Peddler:** Tread Lightly, Jenny Bean Creation; **Cherrywood:** Easter Ribbons, Scissors; **Bent Creek:** Quaker Noel Row, Uber Snowman; **Prairie Schooler:** Sunny Day, Folk Eggs, As the Crow Flies; **Just Nan** - Emma & Eliza's In the Garden Sampler (limited edition), Violets Humbug, Bluebird Alphabet.

OTHER: **Canvas:** Needle Delights - Color Delights Camouflage, Appalachia; Laura J. Perin - Winter Sky, Bargello Egg; DebBee's Designs: Harlequin Opal. **Hardanger:** Rose Marie - Vivid Violets, Sunshine; Lacey Thread Designs - Hearts and Flowers. **Other:** Ruth Chamberlin - Beginners Guide to Goldwork; Blackwork - E. Almond's Midnight Garden

Happy Stitching!

Karol

Have a blessed Passover/Easter season and safe travel if you are on the move.



Custom Class Schedule: If there is a technique you would like to learn, call me at 319-352-5464 or come in to pick a project and schedule a time when you can come. I would like at least two people in a class, three or four are more fun, so invite a friend or two to come with you. Costs will be set depending on the project materials and instructional book or pattern plus a small teaching fee.

These are some of the classes we have offered before: counted cross-stitch, beyond cross-stitch which would include adding specialty stitches, stamped cross-stitch/embroidery, canvaswork - needlepoint, hardanger, pulled thread, drawn thread, bargello, petite point on silk gauze, knotted work, smocking, temari balls, knitting, crochet, duplicate stitch, myreshka drawn work, tatting, bridge stitching (darning stitch), beadwork (peyote, herringbone, right angle weave, square stitch, brick stitch), huck embroidery (Swedish weaving), Brazilian embroidery, silk ribbon embroidery, punch needle, locker hook, stumpwork, blackwork, beginning piecing for quilting, paper piecing for quilting, fusible applique, crazy quilts, bargello quilts, felt applique, free lace for scarves/shawls, framing and mounting tips, finishing pillows, finishing standups, finishing in a box shape, tassels, etuis, stitch notebooks.

If you already know how to do a technique but would like to pick a harder project or make a conscience effort to work on a specific one – new or already started, let me know and we can have a dedicated stitch-in with help available as needed. We offer a place to stitch without interruption from children, spouse, phone (if you turn your cell off). We have the expertise to assist you if need be. Learn something new this year and finish at least one started project!



Pray for world peace to become a reality.

Design stitched on 30 ct Natural Northern Cross linen
using 2 strands Weeks Dye Works over 2 linen threads.

Stitch Count : 42 high x 66 wide

Design Size: 2-3/4" high x 4-1/2" wide

Weeks Dye Works:

U Brick
+ Cadet
7 Mulberry

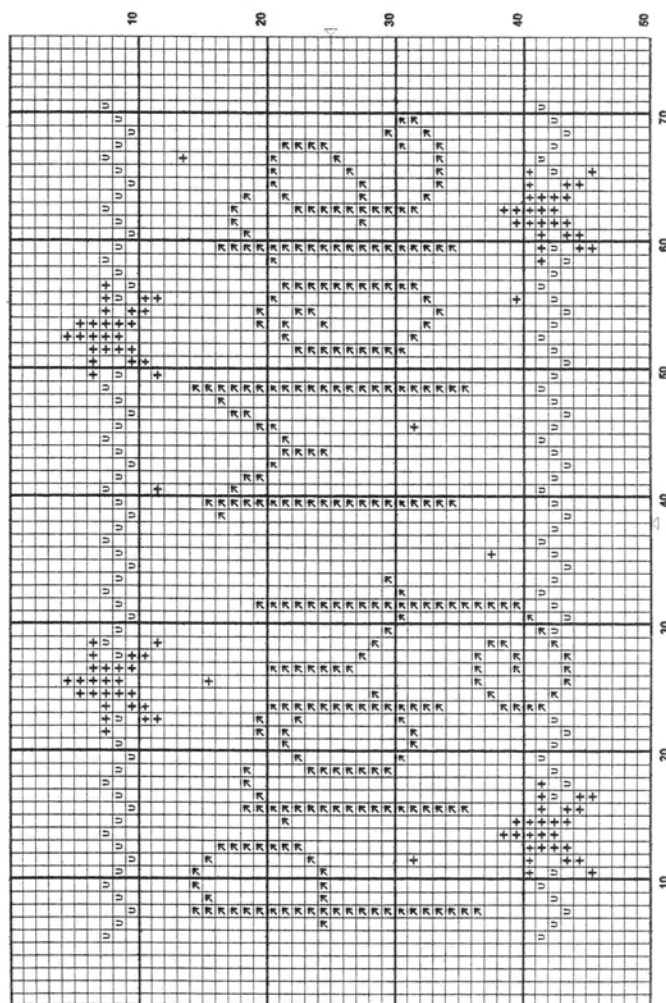
Copyright 1-2003 - XXXX 4 My Boys XXXX.

May be reproduced for newsletter or handout.

Not to be kitted or sold.

XXXX 4 My Boys XXXX

Ph: 920-405-9537 email: stitchwig@aol.com



★ Pray More ★

Compliments of:

XXXX 4 My Boys XXXX

Counted Thread Designs

NEWSLETTER SUBSCRIPTION REMINDER:

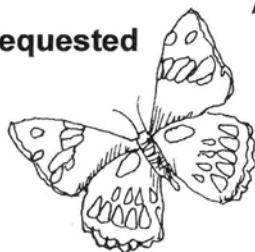
Please note the date on your mailing label. Your subscription will expire a year after that date unless you let me know you would like to keep receiving the newsletter. Please keep me advised of any address changes, as well. Thank you!

Fiberworks
108 E Bremer Ave
Waverly, IA 50677

LOVE to SHOP HOP TRAIL
April 7 – 8 – 9, 2011
20% off quilting fabric/books
ONLINE NEEDLEWORK SHOW
April 14-17 24/7

**STANDARD
PRESORT
U.S. POSTAGE PAID
PERMIT NO. 37**

Return Service Requested



A complimentary pattern courtesy of:
BLUE RIBBON DESIGNS

Stitch Count: 56 x 53

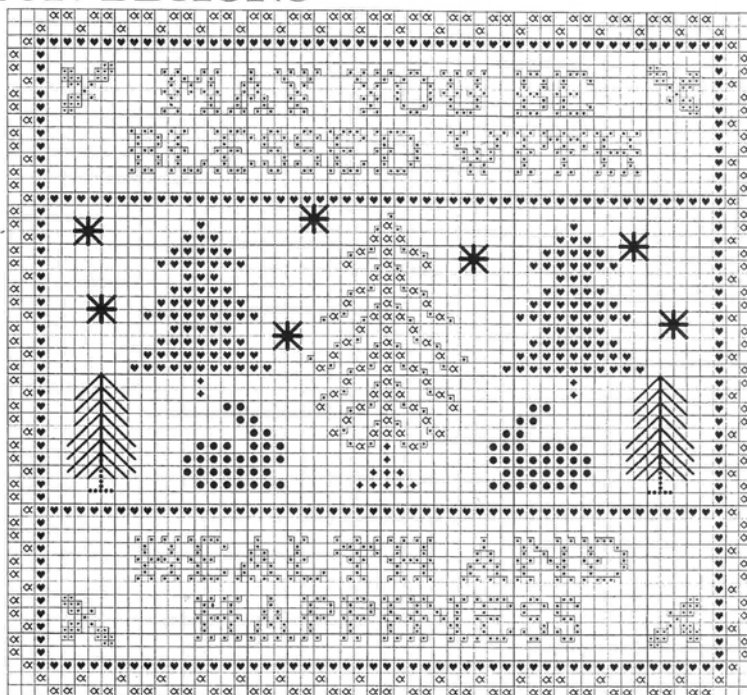
Fabric: Linen of your choice
Model used: 32-Count Exemplar from Lakeside Linens.

Threads: Threads of your choice
Model used:

Symbol	Gentle Art Sampler Threads	DMC
♥	Blue Spruce	500
■	Cranberry	902
✕	Pine	501
◆	Sarsaparilla	632
●	Tarnished Gold	420
	Picket Fence	B5200

Each square on the graph equals 2 linen threads.
Cross-stitch over two linen threads: use two strands of floss.
Cross-stitch over one linen thread: use one strand of floss. (All letters, berries on the tree, and holly berries are Cranberry – holly leaves are Blue Spruce.)
Snowflakes are a smyrna cross stitch with two strands of Picket Fence.
Outer trees (solid lines) are long stitches with two strands of Pine for the branches and two strands of Sarsaparilla for the trunks (dotted line).

This complimentary design may be reproduced for newsletter or handout; however, it must remain intact (as is) with all logos, notices, credits, and copyright information remaining. It is not to be kitted or sold. This design may not be digitized and/or posted on the Internet without written permission.



©Copyright 2006 Blue Ribbon Designs, LLC / Belinda Karls-Nace

