

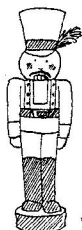
FIBERWORKS - THE FLYING NEEDLE

November 2012

319-352-5464

Vol. 20 No. 1

Out of local area use 1-800-307-4103, E-mail info@myfiberworks.com



Holiday Open House: We will be open on Sunday, November 18th from 12-4 to kick off the Christmas season. Santa will be in town and we will have goodies and hot cider for you at the back table. Stop in and say hi and look for bargains on sticky notes throughout the store.

Fall Foliage Fabric Tour: Congrats to the winners from the fall tour – Mary Jo S, Greta C. and Sue Z were the shopping spree winners and Fern M., Cheri U., Melodie C., Liz W., Cindy G. and Mary Ellen B were the store door prize winners. See you next spring for the Love To Shop Hop Trail! We will have the Prairie Rose Fabrics in Clarksville join us for this.

Newsletter Delivery: If you would like to receive your newsletter electronically rather than by regular mail, let me know. I send out an email to let you know when it is posted on our web site rather than send the actual newsletter to you by email. This helps to prevent some inboxes from becoming too full.



Sale of the Month: November 13 – 17 finish those projects up with 15% off all in stock frames. December 11 – 15 all knitting and crochet supplies will be 15% off.

Blog is up and running at this link

<http://www.myfiberworks.com/blog/>



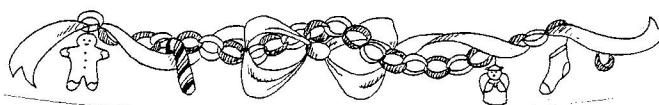
Holiday Hours: We will be closed on Thanksgiving, Christmas and New Years days and closing at 3:00 on November 21st – gotta get that turkey in the oven!

Christmas on Main will be on Thursday, December 13th from 6:00-8:00. Come and see the live windows and have a cup of hot chocolate at the hot spots.

Patterns: Thanks to Kreinik and Rainbow Gallery for the freebie patterns in this newsletter. A small design like this is a great way to try some of their threads.

TECHNIQUE TIP: Common Embroidery Stitches

Many embroidery stitches are named by their appearance. For example, a cross stitch looks like an "x" and can be varied so it does not cover a square area. Like an elongated one is taller than it is wide. It can be tied down in the middle. It can also be a + shape if it is upright. Several are a combination of different steps to complete them. A lazy daisy looks like the petal of a flower so it is a loop that has a tie down stitch at the top to hold the loop in place. If you do a continuous lazy daisy it becomes a chain stitch and does look like links in a chain. The fly stitch is a vee shape with a tie down stitch in the middle to pull the shape of the straight stitch. The feather stitch is a series of continuous fly stitches offset so they are not in a vertical row but sort of wavy. The tie down stitch becomes the V of the next one under it. A long armed feather stitch is more uniform and looks like it has a braided center. A parallel feather stitch is more rounded than the fly stitch and is connected at the top of the arm to the next one. The blanket stitch is used quite often for going around appliqué pieces. It makes a continuous line on the outside of the stitch while having arms that come back onto the piece from the edge. It got its name from the stitch traditionally used to finish the edge of blankets. A buttonhole stitch is very similar to a blanket stitch but is closer together so that it makes a purl along a cut edge as around a buttonhole. The dreaded French knot is really simple if you learn to hold the thread taut after you wrap around the needle until the thread is pulled through the fabric. Traditionally, only one wrap was done and the size of the knot was adjusted by the thickness of the thread used. A bullion knot has several wraps so it looks like a little worm on the fabric. A colonial knot is used most often in candlewicking and is like a French knot but has a figure eight twist around the needle. These are usually more uniform than its cousin. The outline or stem stitch is a good one to use if you want to make a line out of smaller stitches. For the outline stitch you always keep your thread above the needle as each stitch is taken. The back stitch is started one stitch length away from the end of the line and then stitched back toward the beginning. Holes are shared so this makes a thinner line than the stem or outline. Satin stitches are laid side by side to fill in an area. These are just a few of the common embroidery stitches. There are lots of variations of all of these stitches so if you are interested in doing this technique, it is wise to invest in a good reference book.





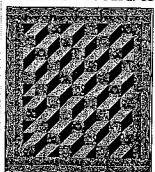
FIBERWORKS - THE FLYING NEEDLE - PAGE 2



WHAT'S NEW! -

Kits: Mill Hill - Snow Crystal ornaments, Sticks Rise & Shine, Today is the Day, Grow a Garden; Lizzie Kate - Inspiration Boxer Dance in the Rain; Triology - Secret Ingredient; Bent Creek - Parts 1 & 2 of the Ark Mantle (one more to come to complete the series, North Pole Globe, Sweet Simple Things; Stoney Creek - Holly Berry ornaments Santa, Stocking, Star and Cardinal; **Quilt kits:** Thimbleberries Christmas Kaleidoscope the last of the Pattern Party series, RJR Bountiful quilt, Studio E Urbanista, South Sea Imports Coconut Grove Growth Chart (this is a cute series with monkeys and bananas). **Other Stuff:** DMC - floss more variations colors and metallic colors; Alpine - Button packs bright and pastel shaped assortments; Fabric: Elizabeth's Studio - Farm animals; RJR - Dan Morris' True Colors and Military Salutes US Army now - Air Force, Marines and Navy joining up next month; Henry Glass - Two by Two (Noah's ark).

Shoe Box Treasures



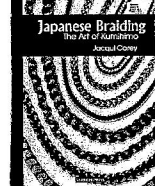
With over 1000 patterns, Shoe Box Treasures is the perfect place to find the patterns you need for your next project.

• Well, lay on the bed with it!
• For adult beginner or child with supervision

The Needle's Notion



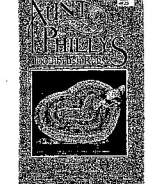
Glenn Tilling Angel
A Charmed Needlepoint Design
Handmade quilts with a touch of history
Designed by Glenn Tilling



Japanese Braiding
The Art of Kurokawa
Angela Cramer



EAGLE
Original artwork by
Sue Coleman
Quilted from 100% Cotton
100% Cotton - 100% Love



The Flying Needle
Original artwork by
Sue Coleman
Quilted from 100% Cotton
100% Cotton - 100% Love



The Flying Needle
Original artwork by
Sue Coleman
Quilted from 100% Cotton
100% Cotton - 100% Love

QUILTING: Quilting Discoveries: Circle of Hope, Fire and Ice, Masquerade, Any Way You Cut It; Need'I Love: Garden Gate Threads; L & L Studios: Peppermint Twist, Cascading Ribbons, Peony Ribbons; Quilt in a Day: Braid in a Day; Frog Hollow Designs: Junk to Jems, Saturn 6; Rose Cottage Quilting: Scenic Circle; Brenson Studios: Harmony Jacket, Strippy Scrap Jacket; Snuggle Quilts: Mostly Strips Garden Path; Nellie J Designs: Paradigm Shift; Better Homes & Gardens: - Winter 2012 Quilts and More, Fall/Winter '12 Quilt Sampler magazines.

CROSS STITCH: Dinky Dyes: Shades of Autumn; Just Nan: Peppermint Snowflakes Tree, Ornamental Advent; Homespun Elegance: Sept Wicked Cat Sampler, Alpha Bee, Halloween Rounds, Cinnamon Stick Stocking IV; Freda's Fancies: 4 Quadrilles; Stitching Studio: Elk, Chickadee, Native Wolf, Cougar, Night Moves, Northern Lights; Blackbird Designs: Summer's Last Rose, Merry Christmas, Feast of Friendship; Jeannette Douglas: Apple Stitches, Pumpkin Stitches, Christmas Sampler; Erica Michaels: Count Your Blessings, Hark!, Spirit of Christmas; Rosewood Manor: Nostalgia VII, Acorn Forest, Four Corners, Arise My Soul; Little House Needleworks: Gingerbread Cookie, Winter Plaid, My Sheep, Country Christmas; Shakespeare's Peddler: Jenny Bean Halloween Sampler; Rovar's: Cat, Dog, Heart and Stitching alphabets; DebBee's Designs: Red Herring, Bon Bon I; Country Cottage: Be Thankful, Cottage of the Month November; Praiseworthy Stitches: Croaking Toad Manor; Tempting Tangles: Verdant Variations (with green silks); Creative Poppies: Santa, Mrs. Santa, Rudolph and Erik the Elf pendant ornaments; Blackberry Lane: Keeping Watch; Stoney Creek: Fright Night Friends, Woodland Babies, Christmas Snowfriends Banner; The Needle's Notion: Snowball Garland, Bewitching Trio, Alphabet Dolls, Christmas Concert, Amana Inspirations, Pyramid Pines; JBW Designs: Petite French Stocking; Imaginating: Beasties, Joy; Lizzie Kate: Joy to the World, 2nd 3 of Snow Belles series; Heart in Hand: Boom Boom, Holiday Hound; Cherry Wood: Let Us Build, baby baby, Franks for the Treats, Pincushion; Ink Circles: Cirque des Coeurs; Pickle Barrel: Santa's Workshop, Christmas Hodgepodge; Tams Creations: Autumn Squirrel, Magical Nights, Floral Mandala, Spring Pinwheel, more bicornus and star shapes; Shepherd's Bush: Charland's Stocking; Bent Creek: What's on Your Mind Candy Corn, District 13 House of Bats, Owl Next Door, Jack in the Box; Val's Stuff: Old Man Winter, Cast a Little Spell; Sue Hillis: Pajama Santa.

OTHER: Canvas: From Nancy's Needle - Leaf Fantasy; Laura J Perin - Royal Pavilion, Ebb Tide, Cotton Candy; DebBee's Designs - Happy Hour, Diamond Delight 10; Sekas & Co - several fobs and ornaments; Needle Delights Originals - Double Delights-Plinkime & Charbleu, Peppermint, Carnival; Sandra Arthur - Shapes of Needlepoint (3 reference books) Hardanger: Satin Stitches - Spin Out. Blackwork: Seba Designs - In Full Bloom. Kumihimo: Braiding with Beads, Braiding for Beaders, Necklaces Braided, Japanese Braiding. Toothbrush Rugs: Aunt Philly's - Oval Basket or Rug, Rectangle/Square Rug, Purse.

Happy Stitching!

We wish you happy and safe holidays! Thank you for your patronage in the past year. Karol

MIGHTY T-BEX



Summer Legs



Needle Delights Originals
Double Delights
Plinkime & Charbleu

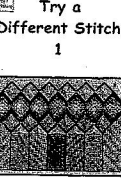


Selina

Handmade Quilts
A Beautiful Tradition



Try a
Different Stitch
1



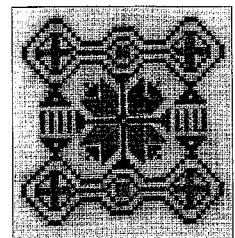
The thirty-six of Freda's Fancies

CLASSES: If you would like to learn some specific technique or work on a specific project, let me know. We will schedule a custom class at your time choice and expertise level.

These are some of the classes we have offered before: counted cross-stitch, beyond cross-stitch which would include adding specialty stitches, stamped cross-stitch/embroidery, canvaswork - needlepoint, hardanger, pulled thread, drawn thread, bargello, petite point on silk gauze, knotted work, smocking, temari balls, knitting, crochet, duplicate stitch, myreshka drawn work, tatting, bridge stitching (darning stitch), beadwork (peyote, herringbone, right angle weave, square stitch, brick stitch), huck embroidery (Swedish weaving), Brazilian embroidery, silk ribbon embroidery, punch needle, locker hook, stumpwork, blackwork, beginning piecing for quilting, paper piecing for quilting, fusible applique, crazy quilts, bargello quilts, felt applique, free lace for scarves/shawls, framing and mounting tips, finishing pillows, finishing standups, finishing in a box shape, tassels, etuis, stitch notebooks. Just let me know your pleasure.

SIT AND STITCH – COME AND JOIN US!

"Sit and Stitch" will be "officially" on the third Thursday of the month in November and the fourth Thursday of December from 6 to 8 or however late you want to stay. During this time you can come to the shop and work on whatever project needs the most attention. This is a great time to finish up those Christmas gifts with no one looking over your shoulder. If you need any assistance or have questions how to do things on your stitched pieces, I can help you with those as well. Actually we have some friends that want to stitch together more than once a month and often come in on other Thursdays of the month that they are free. All are welcome.



This silk ornament reminds us of the rich, velvety softness of a red poinsettia, trimmed with green garland.

Gifts of the season

*Design by
Kandace Thomas*

Materials Needed

Kreinik Silk Mori® 4037, 5057 (2.5m skein of each)
Kreinik Silk Serica® 1116
28-count ivory linen

Color Key

- KREINIK SILK MORI
- 4037 Vy Dk Kelly Green (cross stitches)
- × 5057 Vy Dk Slate Blue (cross stitches)

Instructions and Stitching Tips

This counted thread design is worked over two threads on 28-count ivory linen. Each square on the chart equals one fabric thread.

PREPARATION TIPS:

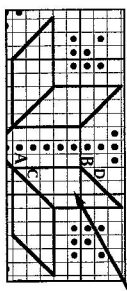
- Use a non-greasy hand cream to moisturize skin
- and prevent the silk thread from snagging on rough spots.
- Cover the raw edges of your fabric with tape, or turn the edges under and secure with a running stitch to protect the thread from snagging on rough edges.
- Make sure you are using a needle large enough to open the hole in the fabric sufficiently and allow Silk Mori and Silk Serica to flow through easily; this will keep the thread from fraying or being damaged.

1. Work cross stitches first, following the symbols on the chart, using one strand of Silk Mori.

- TIPS:** • Open a skein of Silk Mori by removing the wrapping and loosening the slip knot holding the ends together. To separate strands of Silk Mori, hold the end and pull out one strand at a time, straightening the thread after each strand has been pulled out.
- Use short lengths of thread—18 inches or less—to give you more control over the thread and reduce thread abrasion from repeated passes through the fabric. Also, let the needle hang frequently to reduce tangling.

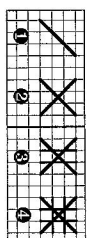
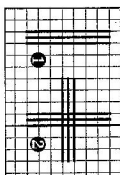
2. For the Satin Stitch and Straight Stitch areas, use one strand of Silk Serica in 1116. (In this design, one 'strand' of Silk Serica refers to the 3-ply twisted thread as it comes straight off the reel)

a. The inner, lined areas are worked in Satin Stitch:



Come up at A and down at B. Continue at a diagonal, laying the thread neatly until the section is filled.

b. Steps for the Straight Stitches in this design:

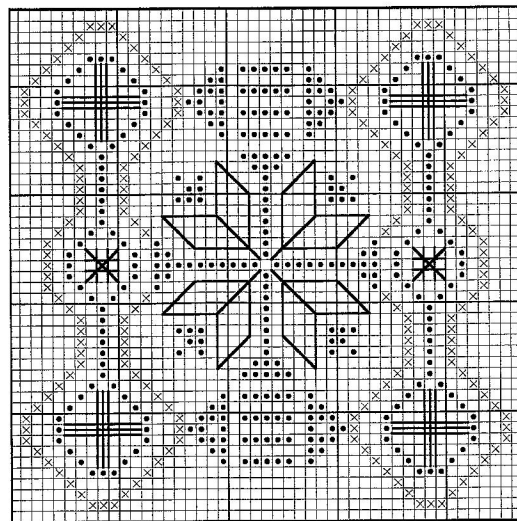


TIPS: • Use only 12- to 18-inch lengths of Silk Serica to avoid excessive abrasion on the thread from repeated passes through the fabric.

- Maintain Silk Serica's twist by letting the needle dangle every few stitches, or applying a slight reverse twist to your needle as you stitch. This will keep the softly twisted silk from untwisting or becoming too tightly twisted.

GENERAL NOTES ON SILK THREADS:

To maximize the unique lustre of silk threads, use your needle or a laying tool to lay the thread neatly or to keep plies parallel. Contact Kreinik's Consumer Info line at 1-800-637-2166 or visit our Web Site at www.kreinik.com for more information on silk or laying tools. Silk threads should not be washed; dry clean only.



© COPYRIGHT 1999 KREINIK. THIS CHART MAY BE REPRODUCED.

Please note the date on your mailing label. Your subscription will expire a year **after** that date unless you let me know you would like to keep receiving the newsletter. Please keep me advised of any address changes, as well. Thank you!

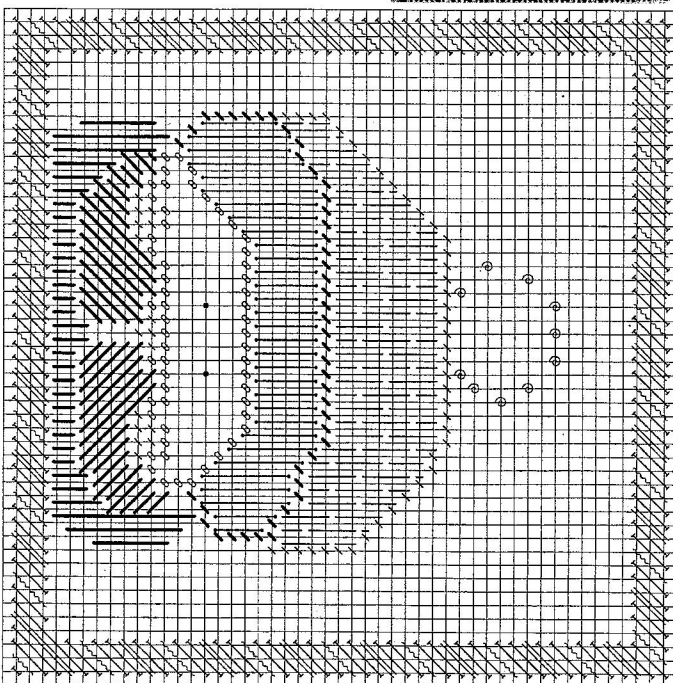
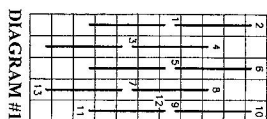
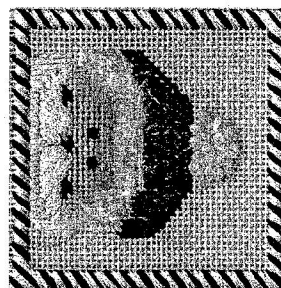
PERMIT NO. 37



A Cheryl Schaeffer Design for Rainbow Gallery

6" x 6"—#18 mono canvas (White); Stretcher bars to fit; #22 Tapestry needle; 1 card each of the following:

Neon Rays® N105-Christmas Green, N20-Red, N102-Artique White, Splendor® S820-Ruby Red, S801-Black, S816-Pink, Matte 18 White, Alabaster BG7-White Pearl, Fancy Fur FN62-White



S816	0
French Knot S801	⊖
S820	/
N102	↘
N20	//
N105	
BG7	↗
FN62	•
French Knot fn62	•

1. **Border**—Pad with **Maree 18**. Place **Slanted Gobein Stitch** in **N102** over entire padding. Add the red and green stripes over the **N102**, as shown on chart using **N20** and **N105**.
2. Outline the following in **Ten Stitch**: **Hat**—4 ply **Splendor (S820)**; **Face**—4 ply **Splendor (S816)**; **Hat cuff**—**Alabaster (B3G7)**.
3. **Face**—**Cheeks** and **nose** are **Ten Stitch** in 4 ply **S820**. Fill in face with **Ten Stitch** using 4 ply **S816**. **Eyes** are **French Knots** in 2 ply **S801**. **Mustache** and **Beard** are long stitches in **BG7**. See **Master Chart** for slant of mustache stitches.
4. **Hat**—**Rim Stitch** (over 4 threads) using 8 ply **S820**. See **Diagram #1**. **Cuff** is vertical long stitches in **FN62**. **Pom pom** is **French Knots** in **FN62**.