

FIBERWORKS - THE FLYING NEEDLE

September 2016

319-352-5464

Vol. 23 No. 5

Out of local area use 1-800-307-4103.

E-mail: info@myfiberworks.com Web site: www.myfiberworks.com



Anniversary #23! We'll be celebrating with our traditional "pop" tree with drawing for 10, 15 or 20 percent off all regularly priced purchases. Join us from Sept 20 thru 24 to try your luck and get your party favor.

9 Patch Bingo Bounce in October:

Dates are Oct 12 – 15 for the bounce. Remember the more black-out bingo cards you fill, the bigger the prize drawing category your name will be entered into. Get your passport and first bingo card at any of the participating shops – us, Moose Patch, Dralles, Prairie Rose, Crazy to Quilt, LuliJunes and Jen's Needlework – same stores as in previous years. Or print it off yourself from our web site – coming soon.

V © Moose Patch BINGO BOUNCE OCTOBER		
\$5.00	\$5.00	\$5.00
\$5.00	FREE	\$5.00
\$5.00	\$5.00	\$5.00

Congratulations to Nancy F. for being the first one to bring her beautiful Row by Row finished project in for our fat quarter basket. Remember we cannot mail kits or patterns until after October 1st if you didn't get in to pick one up during the hop. I will add them to our web catalog when the time is right.



The models are here until Sept 24th.

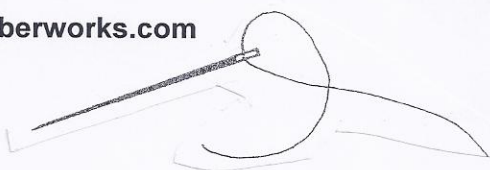
Be sure to stop in and look at these cute and inspirational counted cross stitch pieces from Lizzie Kate.

Collective Stitch: Congrats to Kim B. for winning the drawing for a free book of all the autumn designs. We do have a couple more for sale if you didn't win.

Heads up on holiday closings: Nov. 23, we will close at 3:00 and we will be closed on Thursday, Nov. 24 (Thanksgiving) and Saturday, Dec. 24 (Christmas Eve). Holiday Open House will be Sunday, November 20th from 12-4.

The fireman's convention will be in Waverly after Labor Day. On **Saturday, September 10th** they will have the street in front of the store blocked off for their water games. **Please feel free to use the back door to enter.**

TECHNIQUE TIP:



Applying the binding to a quilt needs to be done with care to avoid problems such as waviness at the edge of the quilt. Here are some ideas to avoid problems and achieve a professional looking finish.

- Be careful not to pull the quilt as the binding is sewn on. Pulling will make the quilt wavy on its edges.
- Apply the binding to the top immediately after the top is finished. After the quilt is quilted, blindstitch the already applied binding to the back.
- To eliminate extra bulk in the corners, start sewing the binding on a side of the quilt rather than at the corner.
- Machine stitch the binding to the quilt using a fusible thread in the bobbin. Turn the binding to the other side for the second stitching, and quickly press it with the iron. It will hold in place without the use of pins.
- Always double the fabric on the binding so it will be more durable.
- The quilting pulls the quilt together a bit, so the outer edge is a bit larger than across the center of the quilt. For this reason, ease in the quilt by stretching the binding just a bit, so the edge doesn't wobble when it is finished.
- When turning the binding to the back side for final hemming, be careful to keep the bias parallel, front to back. Stretching or folding it unevenly will cause the binding to wrinkle.
- To prevent buckling, sew bias binding to the quilt top only. then hand-sew the binding to the back of the quilt and quilt along the bound edge border.
- When sewing binding onto the quilt by machine, shorten the stitch length. It seems to help take up some of the fullness of the fabric.

WHAT'S NEW!

Kits: Three Jars Full – kits for tree skirt and runner using AISH fabrics; Mill Hill – Ornament/pins – Reindeer Games, Jingle Bell Wreath, Snowy Owlet, Chalkboard, Invisible Snowman, Ye Old Santa; Beaded and Buttoned kits – Holiday Sampler, North Pole, Festive Pine, Crystal Snowflake, Winter Stag; Renaissance Santas – Venice, Florence, Genoa; Lizzie Kate – Part 3 of Spooked Mystery Sampler, Pumpkin Pocket, Halloweenie; Sweetheart Tree – Country Flowers and Teenie Love Samplers, Sunshine Yellow Pincushion, Noel Partridge; Amy Brueken – Mr. Twig Snowman; Praiseworthy Stitches – A Spiders Sewing Trifle; Nordic Needle – Basic Bookmarks (4), Victorian Biscornu; Faithwurks – Merry Christmas to You Spool, Little Lambs Eat Ivy, Cool Spool, Friends Flock Together Spool, It's Snowtime ornament; From the Heart – Happy Halloween. **Other Stuff:** Weeks Dye Works – Floss Marmalade and Malachite, Gentle Art Sampler threads – Green with Envy, Rag Doll, French Lilac; Gingher Scissors – Limited edition "Sawyer"; Ultrasuede – in small tubes for finishing projects in silver, navy, coffee cream and coffee bean; Clover – Mini beading loom; Quilt Dots – magnetic Needle Nannies and Scissor Fobs; Sulky – Slimline boxes for thread storage; Bee Company buttons Red Birds, Red Sleigh, Christmas Garland, Tree/Stars; **BEADS** – More colors of Bricks, Super Duos, Mini Duos, Lentils, Silkies, Triangles, 3mm Fire Polished rounds. **Fabric:** Quilting Treasures – Christmas Dream, Heavenly, Glory, Elmo & Friends, All that Glitters, Santa Coming To Town, Duck Lake; Windham – Calling All Nurses; Studio E – , Memories of Civil War II; Mariposa Meadow, Huggable soft book with rabbit ears; Henry Glass – Peace on Earth; Blank – Simple Pleasures, Day of the Dragonfly.

CROSS STITCH: Just Nan: Autumn in the Meadow w/squirrel bead, Mr. Nutley Owl, Wild Eyed Jack; Faithwurks: Noel and Spell Blocks; **Blackbird Designs:** How Does the Lily Grow, The Gardener; **Rosewood Manor:** Swirling Flowers; **Just Cross Stitch:** Halloween 2016, Christmas Ornaments 2016 here soon; **Stoney Creek:** Farmer's Pride, Halloween Banners 1 & 2, Count Down to Christmas; **DebBees Designs:** A New Star; **Praiseworthy Stitches:** Bump N Dknight; **Imaginating:** Halloween Kit Kat; **Sweetheart Tree:** Patriotic Pin Cushion, White Rose Needlecase and Fob, Tudor Silken Sampler; **Heart in Hand:** Wee Santa 2016, Merry Christmas to All; **Plum Street Samplers:** Sampler Lesson One, Babushkas Blossoms; **Abby Rose Designs:** Spooky Halloween; **Blackberry Lane:** When Cardinals Appear; **Sue Hillis Designs:** Ten Commandments; **Ink Circles:** Reflections of Scotland; **Mani Di Donna:** Christmas Eve Box & Accessories, Halloween Days Sewing Basket, Purple Symphony Sewing Basket; **ScissorTail Designs:** Pumpkin Spice; **Lizzie Kate:** Tiny Tidings XXI, Old School Santa '16, Yearbook Double Flip-it Jul/Aug & Sept/Oct, Be Your Own Kind of Beautiful; **Little House Needlework:** Little Lady Liberty; **The Bee Company:** Primitive Christmas Tree, Fall Pumpkin Frame.

OTHER: **Canvas:** From Nancy's Needle – Holiday Tree VIII; Laura J Perin – Indian Spring; Needle Delights Originals – Rainbow 2 Color Delights, Land of the Free; Carolyn Mitchell – March Moods; Freda's Fancies – Little Blue Book Bag; Threedles – Christmas Ornaments 2016. **Hardanger:** Hanky Panky – Winter White Runner, Snowman Doily, Sand & Snow Doily, Lace Bells; Hardanger Carpacar – Fobmania 2 & 3, Melodia. **Blackwork:** Elizabeth Almond – Shooting Star. **Wool Applique:** Val's Stitchin' Stuff – Bats All Folks, Charmed I'm Sure.

Happy Stitching!

SYMBOLS	WEEKS	GENTLEART
♥	Eggplant#1317	Cinders#7043
■	Schneckley#1223	
◆	Indian Summer #4121	
●	Seaweed#2159	
×		

Model stitched on 30 Count Linen from Norden Crafts. Fibers used from Weeks Dye Works and The Gentle Art. Charms of choice provided by, By Jupiter. Frame by Olde Colonial.

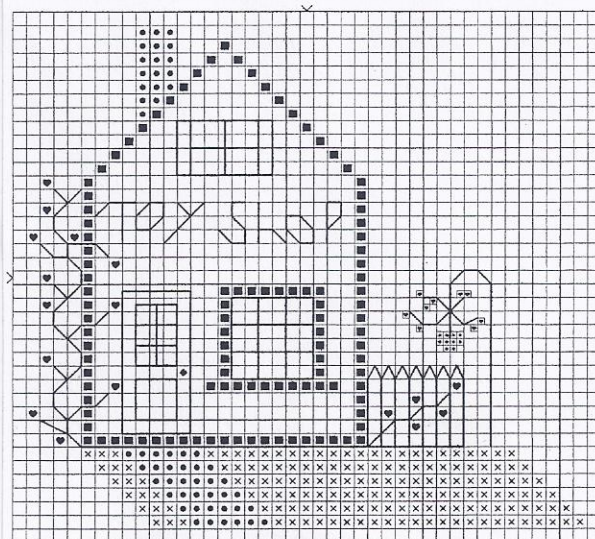
Stitch Count: 41W x 37 H

SPECIAL INSTRUCTIONS:
All stitching executed over two linen threads using two strands of overdyed floss, unless specified otherwise. All backstitching executed using a single strand of floss.

French Knot for door knob in Schneckley. Door, windows, fence and pole for hanging pot backstitch in Cinders. All vines backstitch in seaweed. Toy shop backstitch in Cinders. Flowerpot and flowers over one cross stitch.

FINISHING:
Place charms scattered around. Framed in 5113 Mini with Easel Back for table displaying.

TOY SHOP TOWN SQUARE by Olde Colonial Designs



SIT AND STITCH – COME AND JOIN US!

"Sit and Stitch" will "officially" be on September 29th, October 20th, November 17th. During this time you can come to the shop and work on whatever project needs the most attention. If you need any assistance or have questions how to do things, I can help you with those as well. We have some friends that want to stitch together more than once a month and often come in on other Thursdays of the month that they are free. All are welcome.

Thank you to Olde Colonial Designs and Shepherd's Bush for sharing their free designs for the newsletter.

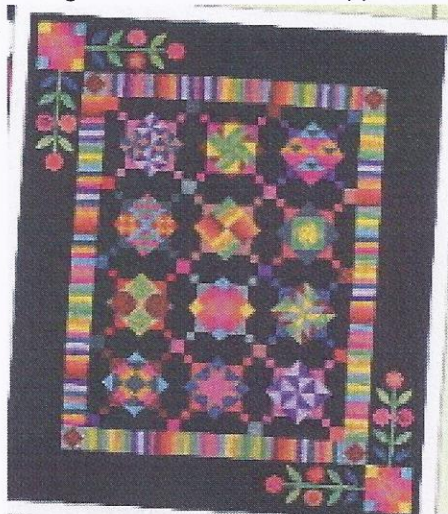
CLASSES: If you would like to learn some specific technique or work on a specific project, let me know. We will schedule a custom class at your time choice and expertise level.

These are some of the classes we have offered before: counted cross-stitch, beyond cross-stitch which would include adding specialty stitches, stamped cross-stitch/embroidery, canvaswork - needlepoint, hardanger, pulled thread, drawn thread, bargello, petite point on silk gauze, knotted work, smocking, temari balls, knitting, crochet, duplicate stitch, myreshka drawn work, tatting, bridge stitching (darning stitch), beadwork (peyote, herringbone, right angle weave, square stitch, brick stitch), huck embroidery (Swedish weaving), Brazilian embroidery, silk ribbon embroidery, punch needle, locker hook, stumpwork, blackwork, beginning piecing for quilting, paper piecing for quilting, fusible applique, crazy quilts, bargello quilts, felt applique, free lace for scarves/shawls, framing and mounting tips, finishing pillows, finishing standups, finishing in a box shape, tassels, etuis, stitch notebooks. Just let me know your pleasure.

We have had a "lost" stamped quilt square that is partially cross stitched with tulips – hoop, too. Please come and get it if it is yours. Although it has been behaving, I hear it sigh for its owner every once in a while.

Newsletter Delivery: If you would prefer an email when it is posted on our web site rather than receiving a mailed copy – save paper and postage, let me know. You will receive a blind copy sent to me, Karol Simmer, so no one else sees your address, with the link to the web page. Please be sure to allow/approve emails from karol@myfiberworks.com so they don't get rejected or end up in your spam folder.

Block of the Month: I finally got the last three solid colors from the fabric company. The first lesson is ready to pick up or mail – whatever you need. I have a couple of extra kits if anyone still wants to sign up for this – just let me know. It is a pattern by Nancy Rink Designs called Amish with a Twist. It has sixteen solid colors on a black background and finishes to approximately 88" x 105". In the middle are 12 different geometric blocks set on point



with a rail fence border and a floral applique on two corners. If you don't like to do applique you can leave it off and repeat the four patch block in the corners. It is a very cheerful looking piece and will be \$15.00 per month for 12 months.

November Special: Anything with a military theme, stars and stripes will be 20% off from Nov 8 – 12. Thank a veteran on the 11th for his/her service!

We have gotten in some sewing machines from Ever Sewn. Introductory prices are 10% off retail. Models are Sparrow 15, a mechanical with 32 built in stitches, Sparrow 20 with computerized package of 80 stitches and Sparrow 25 with 197 stitches in a computer-controlled unit.

NEWSLETTER SUBSCRIPTION REMINDER:

Please note the date on your mailing label. Your subscription will expire a year **after** that date unless you let me know you would like to keep receiving the newsletter. Please keep me advised of any address changes, as well. Thank you!

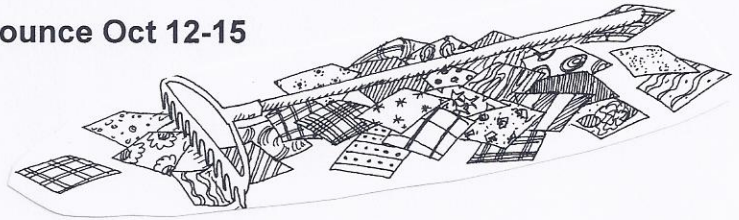
Fiberworks
108 E Bremer Ave
Waverly, IA 50677

Anniversary Celebration
Sept 20-24

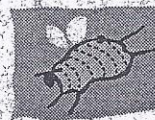
**STANDARD
PRESORT
U.S. POSTAGE PAID
PERMIT NO. 37**

Return Service Requested

Lizzie Kate Now Showing
9 Patch Bingo Bounce Oct 12-15



The Honey Shop



By Shepherd's Bush

MATERIALS NEEDED:

Fabric: 30 Count Linen-La Crescent- R & R Fabric - Cut Size: 9"x 9" or
Fabric: 10 Count Heatherfield -Lambswool - Cut Size: 9"x11"
Stitch Count 30 x 43

CROSS STITCH: Center and stitch over two linen threads with 1 strand
(3 strands for larger count) of Sampler Overdyed Threads (DMC)

	Cinnamon (801)		Grasshopper (3012)
	Slate (3753)		Cidermill Brown (840)
	Summer Meadow (676)		Gold Leaf (729)
	Dried Thyme (3051)		Straw Bonnet (739)
	Tea Rose (316)		Grape Arbor (3740)
	Old Red Paint (315)		Dungarees (931)

RAVEN (310)- back stitch

BACKSTITCH: 1 strand (2 strands for larger count fabric)

Vines and stems : Dried Thyme

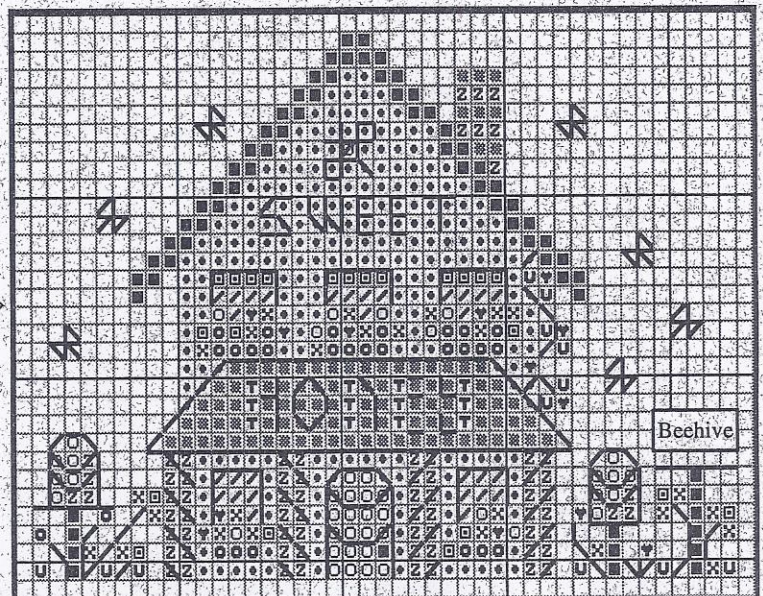
Words: Dungarees

Bees, stripes on the porch columns: Raven

Everything else: Cinnamon

FINISHING: Stitch on a Shepherd's Bush silver beehive charm.

This charm is available from your local shop or from Shepherd's Bush.



© 2006 Teri Richards

Note: This pattern is a free pattern. This pattern is not to be sold or auctioned off on e-bay. It may be copied until September 2007.

To see this pattern stitched, please visit our web site at www.shepherdsbush.net