

FIBERWORKS - THE FLYING NEEDLE

January 2022

319-352-5464

Vol. 29 No. 2

Out of local area use 1-800-307-4103.

E-mail: info@myfiberworks.com Web site: www.myfiberworks.com



It's Back! Football Sunday:

February 13th from 12-4 we will be open for our 25% off sale. If you order online that day, put Football Sale in the comment section and I will apply the discount when I send

you the invoice to pay. Don't pass on the event. Keep your head in the game and you can score the deals.

Next T.O.M. begins January

2022: I had hoped to tell you the first table topper kits were here, but alas, they have not yet arrived. I did get in the two bolts for choice of backing in coordinating fabrics. There is still time to sign up for these delightful monthly projects that finish at 36" x 36". They would make great wall hangings as well as table décor. We do have five of the months put together so you can see what they look like if you stop in. Each month is designed by a different designer and all use Riley Blake fabrics. We also have batting in the correct width for you to add to your list.



January Sale: From the 18th – 22nd we are offering 20% off charms and buttons in stock.



March Sale: All in stock counted canvas patterns will be 20% off regular price. This includes designers like From Nancy's Needle, Threedles, Laura J. Perin and Handblessings.

We hope everyone had a great holiday season and have their stitching projects lined up for 2022. Thank you for your patronage in the past year!

We have started on inventory, so be sure to check the sale boxes/fabric rack for new additions of old friends who need a new home at a reduced price.



TECHNIQUE TIP: How to Colorwash Needlepoint Canvas

Needlepointers, have you ever wanted to "do your own thing"? Kate Gaunt through E.G.A. has shared how to do this. She wanted to do a project using some threads that did not have a good coordinating color of canvas available so she painted her own to go with them. First you will need a piece of blank mono canvas the size required for your project. Next a piece of parchment or waxed paper to put under the canvas to catch any paint drips. Use painter's tape or some other method to hold the canvas in place. Then choose a craft paint to match the threads and get a disposable foam brush. Start with a small dollop of the paint in a bowl or container – it doesn't take much. Add water and mix to make a thin paint solution. Using the brush, wash a width of color across the canvas. It won't be solid. Do additional brush strokes but don't saturate the canvas because you want the sizing to remain so your canvas retains the stiffness. The color will not be 100% even but this adds interest to the background. Let the paint dry before untaping. After the canvas was dry, Kate gave it a light press with an iron using a press cloth. And you are ready to attach to your stretcher bars. Many designs cover most of the canvas but having a colored ground fabric will help to prevent any white canvas "peeking" through between the stitches. You can attach the canvas to the top of your stretchers or to the bottom if you like to "work in the ditch". The edges of the canvas will not snag the threads if it is on the bottom, but it may be more challenging to lay threads if you need to use that technique. Acid free tape is always a good idea to use on the edges of the canvas to help eliminate the snagging problem. Thank you to Kate for sharing her method.

Thank you to: Bent Creek for Snowman Flake and The Cricket Collection for Cardinal Mitten patterns.

We are able to do small classes – one or two – so call to set up a time and technique you'd like to learn. We are open for walk-in business. It's your choice if you want to wear a mask while shopping if you are fully vaccinated.



SNOWMANFLAKE

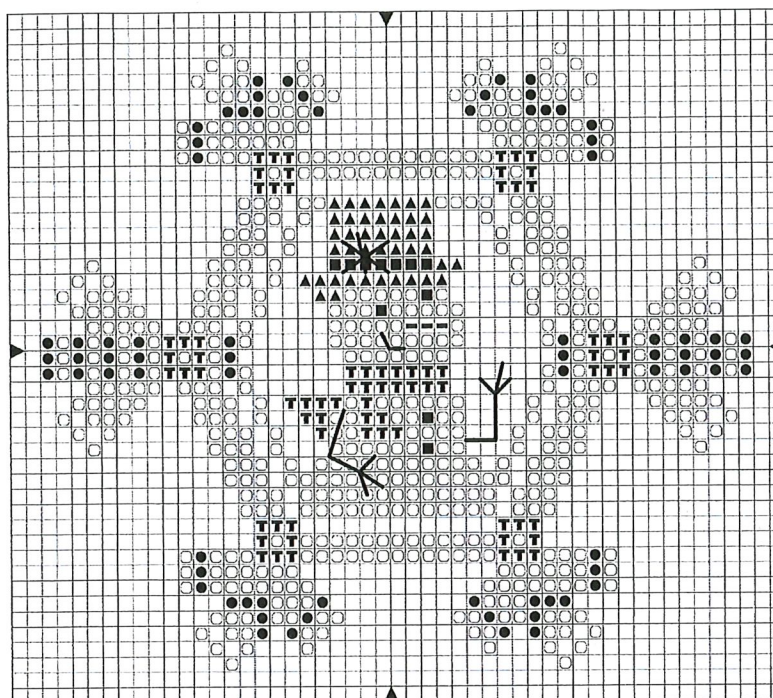
47 X 41

This design can be stitched on any linen/ fabric that white can hold up on and look Beautiful! We stitched it on 32 ct Weeks Dye Works Straw Linen over two threads using two strands of floss.

Longstitch arms/smile: Black Coffee
Longstitch Hat Flake: Bamboo

Here is the fun stuff, we stitched it using grays BUT pick out your favorite white and Three shades of your favorite color and stitch!

	Classic Colorworks	DMC alternate
■	Black Coffee	310
○	Bamboo	3865
▲	Zack Black	535
T	River Rocks	646
●	Lunar Eclipse	647
—	Autumn Spice	3826



Copyright 2020 This design may not be copied or shared on the internet

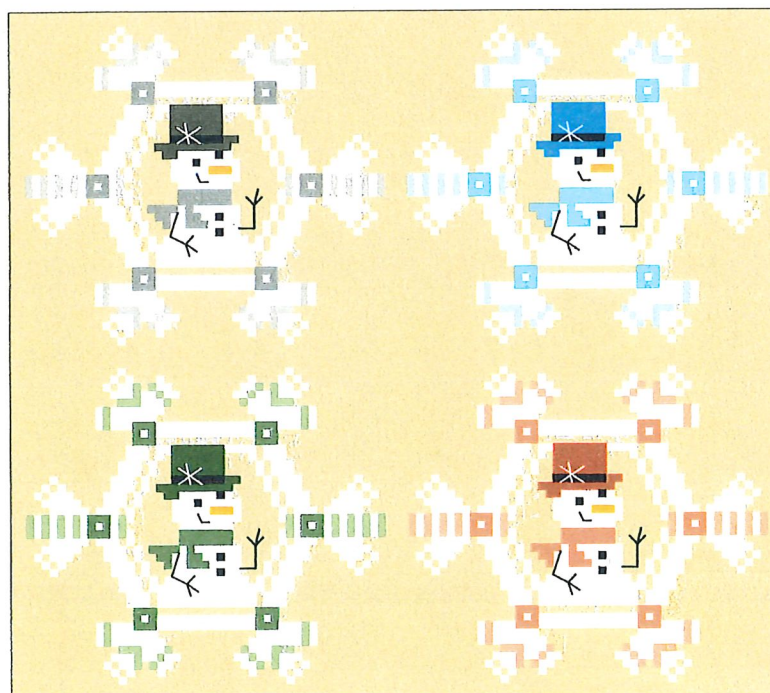


Thank you for joining our Email List!

We are looking forward to sending updates, information just for you, and more freebies!

After you stitch up your SNOWmanFLAKE please share online using hashtag #BENTCREEKCROSSSTITCH

We look forward to seeing your snow finishes.



XX,

Elizabeth & Sissy

01/22

WHAT'S NEW!

Kits: Bucilla – Three D Felt Gingerbread Christmas Houses; Just Another Button Co: Jolly Old Elf and Snowman pincushions, Ruthie, Rudy, Clara and Claus Spoolkeepers; Rachel's of Greenfield: Redwork Mittens, Frosty & Friend and Love, Joy, Peace wall quilts; Ornamental Accents: Folded fabric balls Frosted Beauty, American Spirit, Gold/Silver: Heart in Hand: Collector's Heart 2022. **Other stuff:** It's Sew Emma: Needle nannies Quilty Barn and Sew Day; Uno – skinny LED lamp with three brightness settings; Ginger – Limited Edition scissors Rynn; Creative Grid rulers: Non-slip Crazier Eights, Angle Finder; By the Yard: 2022 Calendar; Picture This Plus: Cross stitch fabrics 40 ct. linen French Lilac, 14 ct Aida Legacy and Gingerbread; Jack Dempsey: Stamped towels and runners to match; Allary Corp.: Embroidery scissors with sheath - Daisy, Lily and Hyacinth floral design handles; Music boxes: Greensleeves and Edelweiss boxes with a round mounting on the top; Just Nan: Gingerbread Bouquet Needle Slide. **Quilting Fabric:** Riley Blake – For the Love of Nature tossed trees and animals; Northcott – Day Dreamin' (Frond design floral), Stars & Stripes 10th Anniversary; Elizabeth Studio – Tucson metallic beaded floral; Studio E – Happy Spring panel and coordinates; Henry Glass – Bluebird of Happiness, Rainbow Cloud Texture, Black ticking stripe; Benartex – Colorweave, Wool Tweed, Washed Wood, Blushed Houndstooth, Cotton Shot and Superior Solids to coordinate with the upcoming All Iowa Shop Hop prints; Kanvas – Unicorn Magic: Oasis – Soccer balls and Baseballs; Flannel with bunnies/moon and twinkle twinkle.

QUILTING: **Fabric Cafe:** Olde Glory, Rail Fence; **Dragonfly Fiberart:** Taipei Moon, Cobblestones, Palazzo, Monochromatic; **Cut Loose Press:** Crazy Christmas Tree and Rick Rack Tablerunners.

CROSS STITCH: **Little House Needlework:** Fall on the Farm – Farm Fresh (first of nine in series); **Scissortail Designs:** Winter Whimsies; **Country Cottage Needleworks:** Sampler of the Month December, Greetings From the North Pole, Nutcracker Village new series #1 Clara and the Prince, #2 Sugar Plum's Sweet Shop; **Cottage Garden:** Time for All Seasons Oct31 #10, Turkey Day #11, Christmas Eve #12, Year in the Woods #1 The Fox, #2 The Swans, Snow in Love, Christmas Delivery; **Heart in Hand:** Very Merry Christmas, Christmas Tiny Town; Big Hearted Tiny Town, Winter Doodles; **It's Sew Emma:** Flea Market Baskets, Vintage Housewife, Bee in My Bonnet Set K; **The Blue Flower:** Winter Blooms, Cozy Christmas Cat; **Hands On Designs:** Bottle & Brush Tree Farm, Coastal Holiday; **Stoney Creek:** Santa's Toys Ornaments I, II, III, IV, Joy Silhouette; **Erica Michaels:** Winter Berry, Autumn Berry, Bristol Berries III; **Bent Creek:** Look for the Beauty, Best Day Winter, Best Day Spring, Best Day Summer, Best Day Autumn; **Plum Street Samplers:** The Gather Inn, Goodness & Thanks, Good Company, Betsy's Autumn Bird & Acorn; **Primrose Cottage Stitches:** Deck the Halls. January, February and March Nine Patches, Let It Snow, Jingle All the Way; **Homespun Elegance:** Wicked Stitcher, So Thankful for Thanksgiving, Wishing Ewe Christmas Peace, Merry to All, Quaker Merriness; **Luhu Stitches:** Heartful Santa, Santa Kringle, Starshine Santa; **Tiny Modernist:** Winter Signs; **X's & Oh's:** Ort Ball Gnomes; **Amy Breucken Designs:** Snow Friends # 7, 8, Witchy Boo Boo, Trick or Treat; **Waxing Moon:** St. Patrick's Trio; **Shepherd's Bush:** Scary, Thoughts of Halloween, Joy, Bring Us Good Cheer; **Jardon Prive:** Heritage; **With Thy Needle And Thread:** Red Bird Sampler, Bells of Christmas, A Winter's Day Visit, Cup of Christmas Cheer, The Snow Ball; **Just Nan:** Christmas Sparkle Bee Ornament, Holly Go Brightly Mouse; **Annie Beez Folk Art:** Gathering Pumpkins, Gathering Holly, Pumpkin Folk; **Bendy Stitchy Designs:** Winter Witches.

NEWSLETTER SUBSCRIPTION REMINDER:

Please note the date on your mailing label. Your subscription will expire a year **after** that date unless you let me know you would like to keep receiving the newsletter. Please keep me advised of any address changes, as well. Thank you!

Newsletter Delivery: If you would prefer an email when it is posted on our web site rather than receiving a mailed copy – save paper and postage. Go to our web site and sign up through Mail Chimp. You can send me an email to tell me you have switched to an email version so I can take you off the mailed version list. We do not share or sell any of our customers' contact information.

Fiberworks

108 E Bremer Ave
Waverly, IA 50677

Return Service Requested

Football Sunday 12-4
February 13, 2022

STANDARD
PRESORT
U.S. POSTAGE PAID
PERMIT No. 37



SUGGESTIONS
Our **Cardinal Mitten** features my favorite little winter entertainer. Catching sight of his bright aspect and energetic activity makes for a few stolen moments of pure pleasure. We suggest a soft woodland colored fabric in a light to medium tone. Our mitten was stitched on 28 count Water Lily Wichtel linen. The floss was worked two ply over two linen threads.

Please be encouraged to choose a fabric and thread colors that appeal to you. Check color compatibility by gathering your thread choices and laying them across your chosen fabric. Try different threads or change the fabric color until you are pleased.

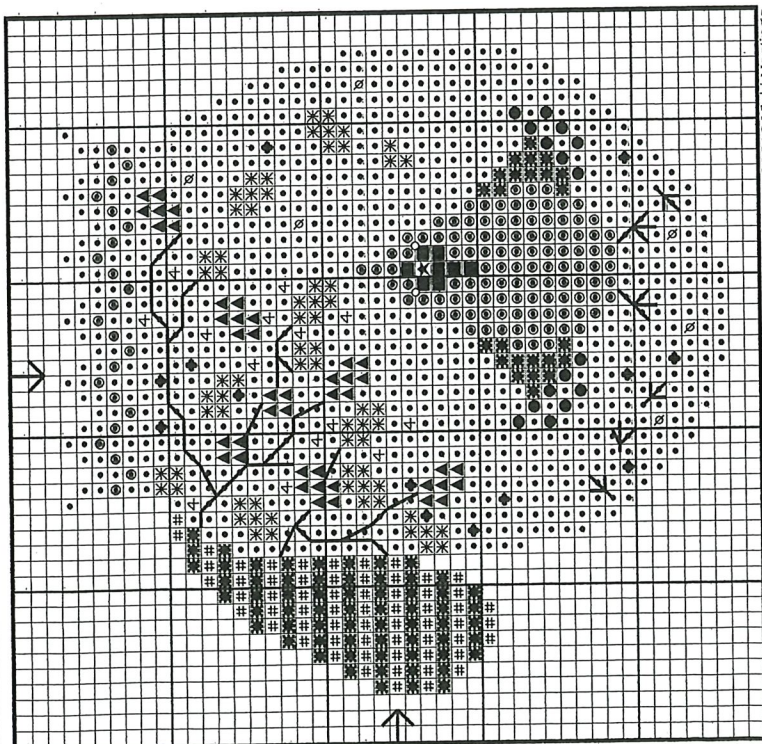
Enjoy!

DMC	ANCHOR
310	403
647	1040
816	43
817	13
844	1041
895	1044
902	897
3347	266
3853	1003
3854	313
3855	311
3865	2

Place your shop information over the text in this boxed area.

All of us at CECricket are pleased to present our **Cardinal Mitten**, sent exclusively to our Automatic Program customers in gratitude for their trust and support. As a count thread design, **Cardinal Mitten** will be held for their exclusive use for a period of one year.

NOVEMBER 2018



©2018 Vicki Hastings

COLOR CODE	
■	Black
■	Grey
●	Cardinal Red
●	Berry Red
●	Charcoal
▲	Dark Holly
▲	Garnet
★	Light Holly
★	Dark Bittersweet
★	Bittersweet
★	Pale Bittersweet
●	Soft White

DESIGN AREA	42W X 43H
10 count	4.2 X 4.3
14 count (28 linen)	3 X 3.1
15 count (30 linen)	2.8 X 2.9
16 count (32 linen)	2.6 X 2.7
Linen worked over two threads.	
BACKSTITCH	Single Ply
Bird Legs	310/403
Branches	610/889
Tracks in Snow	646/8581
FRENCH KNOI	Single ply, fine & light
Eyes (twice around needle only)	310/403

Compliments of
**THE CRICKET
COLLECTION**