

FIBERWORKS - THE FLYING NEEDLE

May/June 2022

319-352-5464

Vol. 29 No. 4

Out of local area use 1-800-307-4103.

E-mail: info@myfiberworks.com Web site: www.myfiberworks.com



All Iowa Shop Hop SOON: June 1st is the start of the AISH. It will go through the end of July. The magazines are here with all the shops hours and locations listed,

several patterns using the limited edition fabrics, interesting articles and your passport on which to collect stickers when you visit a shop. Be sure to get yours before they are all sold out for only \$9.95. It makes a great reference all year long. Each shop will be handing out a 5" x 5" charm square to each participant – ours is a pretty deep red to go with the barns. We will be open on one Sunday during the hop – June 12th from 12-4.

Tabletopper delayed. I just heard from Riley Blake that the next kit should be arriving mid-June. If you are running a little behind in assembly, this gives you a chance to catch up 😊 If you'd like to sign up to get each month automatically, let me know. You save \$1.00 per box this way. We have extras available to purchase individually if there are only a few you would like to do. We have two coordinating fabrics each month if you need a back and 45" wide batting for the middle. If you subscribe, these are 10% off. Projects finish at 36" x 36" so they would make great wall hangings as well as table décor.



August Back to School Sale: From the 16th – 20th look for 20% off anything with letters, numbers, teachers, apples, books, crayons/pencils and school themed items.



Zappy Dots closing: They make magnetic Needle Nannies and sliding tin needle holders with a magnet inside. We have several in stock now with cross stitch designs on them from Blackbird Designs, Plum Street Samplers, Teresa Kogut, for example. Get yours while you

still can.



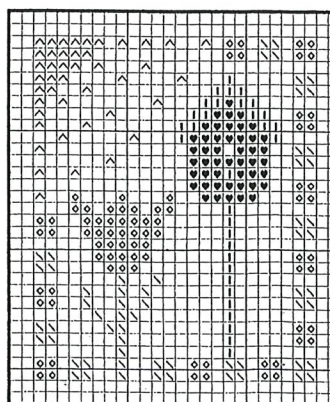
Amy Bruecken Designs: The next Stitch Along is called We Are All a Little Batty Here. It has seven parts with 1 and 2 available now, 3 & 4 in July and 5, 6, & 7 in September. If you'd like to sign up, let me know.



TECHNIQUE TIP: How much fabric will you need for binding?

First you will need to know the measurement of your quilt perimeter (the length plus the width times two) and add 10" to allow for joining seams, beginning and ending overlap. Measure the width of the fabric you want to use for binding. Most quilting fabrics will give you 42" of usable width – don't include the selvage in this measurement. The usual strip width is cut 2 1/2" so you can get 42" in length for each strip cut across the grain of the fabric. Let's use an example of a 60" x 80" finished size quilt. $60 + 80 = 140$ $140 \times 2 = 280$ $280 + 10 = 290$ " needed. $290/42 = 6.9$ or 7 strips $7 \times 2.5 = 17.5$ " so a half yard would do. APQS has made a chart for reference for different widths of strips and different perimeters for easy reference shown on the next page – Happy Binding!

Nashville Garden 2003



©2003 Forever In My Heart

Key	Sampler Thread	Anchor
^	Butternut Squash	891
♥	Bluejay	146
◇	Pomegranate	79
↘	Shutter Green	860
	Woodrose	368
Fabric 25 ct. Floba from Zweigart		
Design Area: 24 by 29		
This design can be stitched with one ply of floss over one linen thread or two ply over two linen threads.		

♥ Forever In My Heart Designs ♥
www.foreverinmyheart.com

Thank you to: Forever in My Heart, Wichelt Imports and Ink Circles for their free patterns.



Binding Strip Cutting Chart

The total strip length in this chart is in inches, and already accounts for the inches lost when strips are pieced together. This chart assumes strips are cut from a fabric width of 40 inches to allow for trimming off selvedge edges, and that strips are joined with a 45-degree seam. Therefore you may get more final length if your fabric is wider or you join the strips with a straight seam.

1. Measure your quilt's perimeter (length + width X 2), then ADD 10 inches to the total to allow for beginning and ending overlap.

Example: My quilt measures 55" by 75".

$$55" + 75" = 130"$$

$$130" \times 2 = 260"$$

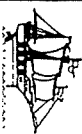
$$260" + 10" = 270" \text{ total pieced strip length needed}$$

2. Choose your binding strip width, then follow across the chart until you locate the "total length" that is greater than your needed length. In the example to the left, a 270-inch strip is needed. If I want binding 2-1/2 inches wide, I need 8 strips cut from 20" (or 5/8 yd.) of fabric, which will yield 302 inches of binding. (Note: 7 strips will give me 265 total inches of binding – 5 inches short of what I need. But if my fabric strips are closer to 42" wide, then I would have enough length with 7 strips instead of 8 strips.)

Binding strip width	1 STRIP		2 STRIPS		3 STRIPS		4 STRIPS		5 STRIPS		6 STRIPS	
	Total length	Fabric needed	Total length	Fabric needed	Total length	Fabric needed	Total length	Fabric needed	Total length	Fabric needed	Total length	Fabric needed
2"	40	2" (1/8 yd)	78	4" (1/8 yd)	116	6" (1/6 yd)	154	8" (1/4 yd)	192	10" (1/3 yd)	230	12" (1/3 yd)
2-1/4"	40	3" (1/8 yd)	77	5" (1/6 yd)	115	7" (1/4 yd)	153	9" (1/4 yd)	191	11" (1/3 yd)	228	14" (1/2 yd)
2-1/2"	40	3" (1/8 yd)	77	5" (1/6 yd)	115	8" (1/4 yd)	152	10" (1/3 yd)	190	13" (3/8 yd)	227	15" (1/2 yd)
2-3/4"	40	3" (1/8 yd)	77	6" (1/6 yd)	114	9" (1/4 yd)	151	11" (1/3 yd)	189	14" (1/2 yd)	226	17" (1/2 yd)
3"	40	3" (1/8 yd)	77	6" (1/6 yd)	114	9" (1/4 yd)	151	12" (1/3 yd)	188	15" (1/2 yd)	225	18" (1/2 yd)
3-1/4"	40	4" (1/8 yd)	76	7" (1/4 yd)	113	10" (1/3 yd)	150	13" (3/8 yd)	187	17" (1/2 yd)	223	20" (5/8 yd)
3-1/2"	40	4" (1/8 yd)	76	7" (1/4 yd)	113	11" (1/3 yd)	149	14" (1/2 yd)	186	18" (1/2 yd)	222	21" (5/8 yd)
3-3/4"	40	4" (1/8 yd)	76	8" (1/4 yd)	112	12" (1/3 yd)	148	15" (1/2 yd)	185	19" (5/8 yd)	221	23" (2/3 yd)
4"	40	4" (1/8 yd)	76	8" (1/4 yd)	112	12" (1/3 yd)	148	16" (1/2 yd)	184	20" (5/8 yd)	220	24" (2/3 yd)

Binding strip width	7 STRIPS		8 STRIPS		9 STRIPS		10 STRIPS		11 STRIPS		12 STRIPS		13 STRIPS	
	Total length	Fabric needed	Total length	Fabric needed	Total length	Fabric needed	Total length	Fabric needed	Total length	Fabric needed	Total length	Fabric needed	Total length	Fabric needed
2"	268	14" (1/2 yd)	306	16" (1/2 yd)	344	18" (1/2 yd)	382	20" (5/8 yd)	420	22" (5/8 yd)	458	24" (2/3 yd)	496	26" (3/4 yd)
2-1/4"	266	16" (1/2 yd)	304	18" (1/2 yd)	342	21" (5/8 yd)	379	23" (2/3 yd)	417	25" (3/4 yd)	455	27" (3/4 yd)	493	30" (5/6 yd)
2-1/2"	265	18" (1/2 yd)	302	20" (5/8 yd)	340	23" (2/3 yd)	377	25" (3/4 yd)	415	28" (5/6 yd)	452	30" (5/6 yd)	490	33" (1 yd)
2-3/4"	263	20" (5/8 yd)	300	22" (5/8 yd)	338	25" (3/4 yd)	375	28" (5/6 yd)	412	31" (7/8 yd)	449	33" (1 yd)	487	36" (1 yd)
3"	262	21" (5/8 yd)	299	24" (2/3 yd)	336	27" (3/4 yd)	373	30" (5/6 yd)	410	33" (1 yd)	447	36" (1 yd)	484	39" (1-1/8 yd)
3-1/4"	260	23" (2/3 yd)	297	26" (3/4 yd)	334	30" (5/6 yd)	370	33" (1 yd)	407	36" (1 yd)	444	39" (1-1/8 yd)	481	43" (1-1/4 yd)
3-1/2"	259	25" (3/4 yd)	295	28" (5/6 yd)	332	32" (1 yd)	368	35" (1 yd)	405	39" (1-1/8 yd)	441	42" (1-1/6 yd)	478	46" (1-1/3 yd)
3-3/4"	257	27" (3/4 yd)	293	30" (5/6 yd)	330	34" (1 yd)	365	38" (1-1/8 yd)	402	42" (1-1/6 yd)	438	45" (1-1/4 yd)	475	46" (1-1/3 yd)
4"	256	28" (5/6 yd)	292	32" (1 yd)	328	36" (1 yd)	363	40" (1-1/8 yd)	400	44" (1-1/4 yd)	436	48" (1-1/3 yd)	472	52" (1-1/2 yd)

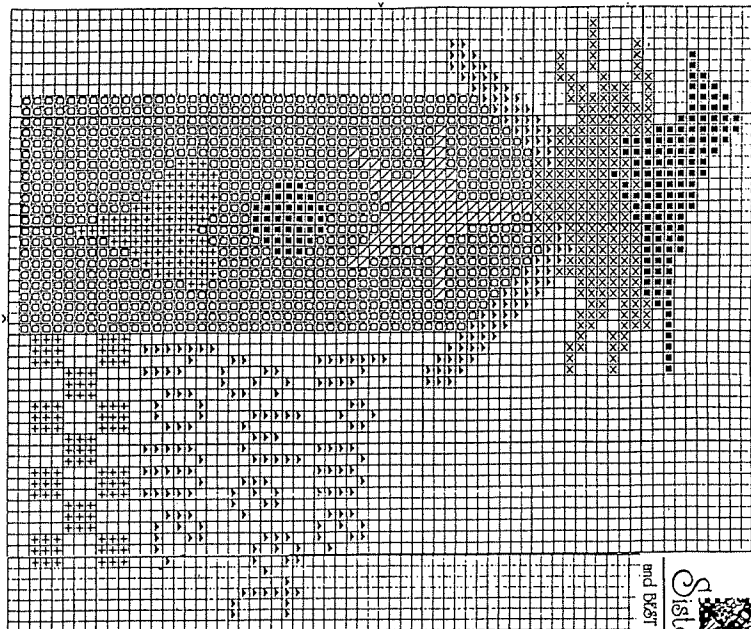
Stitch Count: 56 x 67
 Design Size: 3 3/4 x 4 inches (on 16 ct. fabric)
 Model stitched on 16 ct. English Doves Aqua
 All cross stitches are done with 2 strands of floss. (B&W)
 * Reproduction for free distribution only. Cannot be sold - 1997



Wichelt
Imports, Inc.
N162 Hwy 35, Stoddard, WI 54658
Web Address: www.wichelt.com

Complimentary Graph From:

Crows Nest by Sisters & Best Friends



Sisters
and Best Friends

WHAT'S NEW!

Kits: Just Another Button Company – Violet Fairy Egg Pincushion kit; Mill Hill - Autumn ornament series - Batty, Fall Mailbox, Spooky Cage, Give Thanks, Eyeball Martini, Apple Harvest; Button & Bead kits Potions & Spells, Sunflower Garden, Fall Beach, Autumn Bench, Broom Parking, Haunted Tower; Riley Blake - Quilt kit – A Purrfect Halloween, Tabletopper - Bursting in Air; Creative Needle Art - Ornaments Christmas Ball, Spooky Ghost in a tin, Spooky Cat and Pumpkin in a tin, Easter Eggs 1, 2, & 3, January Santa; Bent Creek – The Narwhal Globe Zipper, Snowman of Snowflakes Zipper, Pop of Spring Zipper; Permin – Hardanger ornaments Christmas trees, hearts and bulbs red or white. **Other stuff:** It's Sew Emma: Mad for Plaid zipper bags Peony, Misty, Bluebell; Jack Dempsey – stamped quilt blocks butterflies and flowers, pillowcases gnomes and wedding ring, crib quilt farm animals; Zappy Dots – Needle Nannies and Needle Tins. **Quilting Fabric:** Riley Blake – Halloween Whimsy Pumpkins and Diamonds; Benartex – Merry & Bright panel, Jolly Holly, Folk Scroll; Marcus Brothers – Bristol Belle Watermark Tan, Woof Woof; Studio E – Midnight Magic; Springs - patriotic Mickey and Minnie Mouse; Henry Glass – Once Upon a Time panel and coordinates princess themed; Timeless Treasures – Six batiks, Magic Dots Butterfly, Forest Magic panel, metallic sparkly marble prints, princess and unicorns, crosshatch burlap blue, glow rainbow tossed flowers.

QUILTING: **Cut Loose by Cathey Laird:** Easy Patriotic Tabletopper.

CROSS STITCH: **Little House Needlework:** Fall on the Farm – Changing Leaves #5, With A Moo Moo Here #6; **Just Nan:** Plumed Peacock Mouse on a Tin; **Country Cottage Needleworks:** Nutcracker Village series #6 Mother Ginger's Candy Store, #7 Mirliton's Music Store; **Cottage Garden Samplings:** Year in the Woods #5 The Ferret, #6 The Bear; **Mirabilia Designs:** Stitching Fairies Linen, Floss, Needle, Thimble; **Hands On Designs:** Celebrations 2, Resting Stitch Face, Red She Said, 4th Block Party, Bumble Square-ology; **Stoney Creek:** Spring 2022 magazine; **Art to Heart:** Bees Hunt; **Just Another Button Company:** Flip Flops, Jolly Square, B is for Beehive; **Plum Street Samplers:** Corgi Caboodle, My Garden House, God Bless America, Thistle House, Adorn Your Heart; **Primrose Cottage Stitches:** July, August & September Nine Patches; **Mani Di Donna:** Patriotic Welcome Pillows; **Teresa Kogut:** Bright Stars, For the Love of Nature, Silhowitches, Newcastle Bouquet, Love Lives Here, Flurry, Gather, Let Love Reign; **Pansy Patch Quilts & Stitchery:** Hester's Special Delivery, Houses on Peppermint Lane #8 Needleworker's House; **Silver Creek Samplers:** Farmer's Blessing; **Amy Breucken Designs:** Batty #1 & 2; **Waxing Moon:** Summer Littles; **Prairie Schooler:** Santas Revisited X (2007, 2010, 2017); **Fairy Wool in the Wood:** A Bee C; **Jardin Prive':** Stitchery; **Little Stitch Girl:** Stars & Striped Biscornu; **Cotton Pixels:** Fireworks, Watermelon Cat; **Hello from Liz Mathews:** Quaker Gardens; **Scattered Seed Sampler:** Cottontails & Company Pinkeep; **ScissorTail Designs:** Sewing Bees; **Sweet Wing Studio:** Forever in Peace; **Artful Offerings:** God Bless America Sampler. Patriotic Pinwheel Parade; **Heartstring Samplery:** Bee Still Mt Heart.

NEEDLEPOINT: **Needle Delights Originals:** Christmas Rounds 4.

Happy Stitching!

Karol

NEWSLETTER SUBSCRIPTION REMINDER:

Please note the date on your mailing label. Your subscription will expire a year after that date unless you let me know you would like to keep receiving the newsletter. Please keep me advised of any address changes, as well. Thank you!

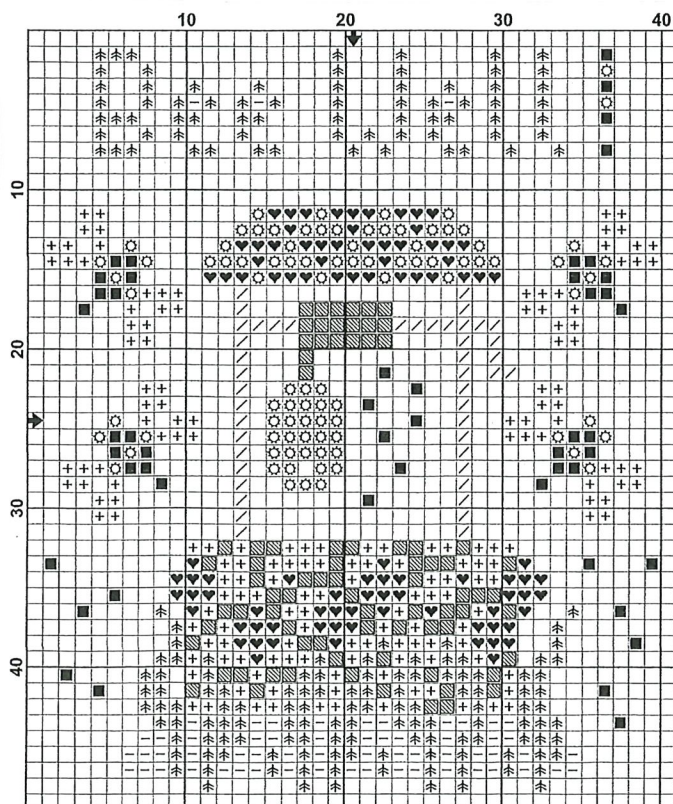
Newsletter Delivery: If you would prefer an email when it is posted on our web site rather than receiving a mailed copy – save paper and postage. Go to our web site and sign up through Mail Chimp. You can send me an email to tell me you have switched to an email version so I can take you off the mailed version list. We do not share or sell any of our customers' contact information.

Fiberworks
108 E Bremer Ave
Waverly, IA 50677

STANDARD
PRESORT
U.S. POSTAGE
PERMIT #37

Return Service Requested

All Iowa Shop Hop
June 1 – July 31



DMC	Color
310	Black
469	Avocado Green
472	Avocado Green-UL. LT
742	Yellow-DK
0024	White Lavender
3802	Antique Mauve-VY DK
3881	Raspberry-DK
3864	Mocha Beige-LT



Ink Circles

Ink Spot #20:

Bee Well

Size: 39w x 47h

(c) 2020 Copyright Tracy Horner of Ink Circles
This chart may be photocopied and shared freely.