

FIBERWORKS - THE FLYING NEEDLE

January/February 2023

319-352-5464

Vol. 30 No. 2

Out of local area use 1-800-307-4103.

E-mail: info@myfiberworks.com Web site: www.myfiberworks.com

It's almost time for Football Sunday:

Sunday, February 12th we will be open from 12-4 before the big game with a storewide discount of 20% on all regular priced items. Plus the bolted quilting fabric closeouts will be an extra 10% off that day. Don't Pass this opportunity to Score big. If you want to place an order on Sunday, but are not physically here – please send me an email with your list. Then we don't have to take calls when we are trying to assist customers in the shop and I have a written reference I can read later.



Monthly sale Feb 14-18: 20% off all quilt kits. Most of these have fabric for the tops and binding and if you add a backing fabric to them, get 20% off that piece, too.

Snow reminder: If the weather is bad, please call first before you venture out to see us. I live out in the country and if the maintainer has not plowed our road out when it snows a lot, I may not be able to get to town. I will post on Facebook if we will not be open.

March 14-18 sale:

Flannel fat quarters – buy one get one half off.



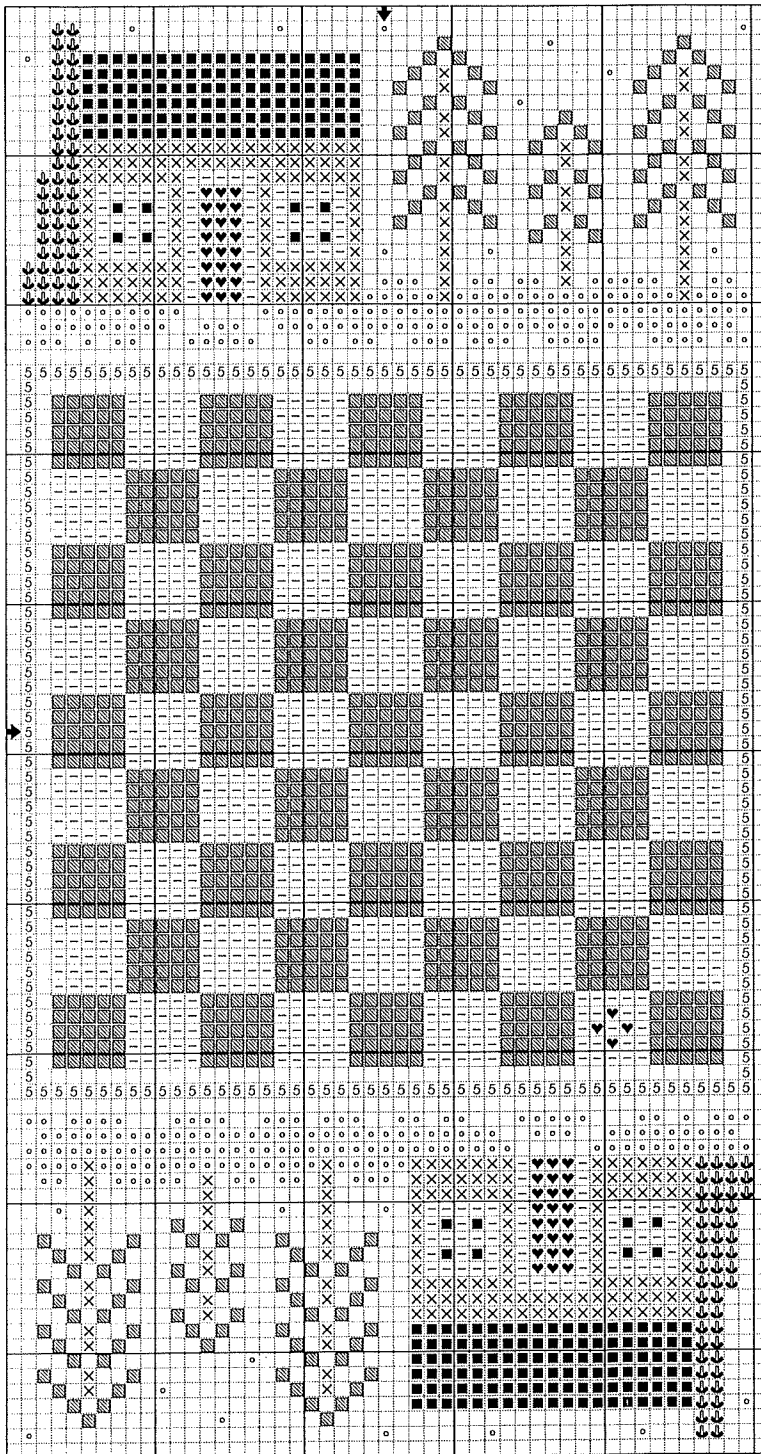
TECHNIQUE TIP: Scissors

Will one pair do you? Of course not! It depends on what you are cutting as to which pair of scissors is best. If you are doing applique, a duckbill or applique scissor helps to keep you from cutting the ground fabric because of the rounded large blade on the bottom. When you are cutting threads out in Hardanger, use a flat, not rounded, narrow pointed blade because you want to get as close to the edge of

the kloster without snipping securing threads and you don't want little thread ends sticking out. If you use a hoop or stretcher bars to hold your ground and work down in the "hole", use a pair of curved scissors to cut off sewing threads so you don't accidentally cut the ground threads. There are also double curved scissors that have a curved blade and bent handle. If you are frogging, (ripping out – sorry to hear that) there are scissors with a hooked blade so it only cuts the stitches in the curve of the hook. If you are cutting metallic threads a lot, a pair with serrated blades keep sharper longer. If you use regular embroidery blades, cut metallics up by the pivot point to help keep the tips sharp for non-metallics. Most 3-4" embroidery scissor work for either right or left handers but some are made especially for lefties with the blades reversed. You have more control with the short length and can get closer to your ends. It is good to try a pair out before buying to see how they feel in your hand. Check to see if they feel like they are cutting smoothly all down the blade and if the finger holes are comfortable and fit your hand. With any scissors used for threads, don't cut paper or other stuff as that will dull them faster and keep them in a scissor sheath when not in use to protect your blades. Sharp blades are important so you don't shred threads when you cut. Frayed threads are harder to get through the needle, as if we don't have enough trouble doing that already. If you have arthritis or large fingers, a thread snip might work better for you where you squeeze with your whole hand to cut. Price is usually related to quality so don't expect longevity from an inexpensive pair. If you need a pair in every project, then you may opt for less costly ones. We have scissors that range from \$200 to \$3 and all have their places. A reminder, if you fly, don't take your best ones along just in case the TSA person doesn't allow them on board and confiscates them. There are scissor fobs available to match scissors, ie. Gingher, if you want to add a little bling to your cutters. And there are lots of shapes on the handle if you are a collector to choose from – flowers, cats, butterflies, Santas, cobwebs, Eiffel Tower, hearts to name a few. Some companies will recondition your favorites for a small fee, making them like new.

Thank you to: Little House Needleworks and Forever In My Heart for sharing complimentary patterns - oldies but goodies..

Miniature Winter Game Board copyright 2006 by Little House Needleworks



Symbol	DMC	Color
♥	400	Mahogany-DK
×	434	Brown-LT
—	738	Tan-VY LT
■	938	Coffee Brown-UL DK
▨	3051	Green Gray-DK
5	3052	Green Gray-MD
↓	3790	Beige Gray-UL DK
○	3865	Winter White

Fabric Suggestions: 32 count Flax, Raw Linen, Summer Khaki, or Confederate Gray Linens from Zweigart. 16 count aida fabrics will work also and will achieve the same size.

The stitch count for the design is 49w X 95h. When stitched on 32 count fabric the design will finish approximately 3" X 6".

Stitch the design using two strands of floss over two threads.

Complimentary Chart from
Little House Needleworks
3321 W. Cinnamon Dr.
Tucson, AZ 85741

Phone: 520-797-8212

Email: TheSamplerLady@aol.com
www.littlehouseneedleworks.com

This promotional design can be copied and distributed freely as long as the intended use is for an individual stitcher. Little House Needleworks retains all legal rights to this design in any and all forms.
Distributed 2006.

WHAT'S NEW!

Kits: Mill Hill – Spring Bouquet ornament series coming soon; Riley Blake - Table topper kit - Shamrock Love (Beverly McCullough of Flamingo Toes) the last in the monthly series; Riolis – Snowflakes; Rachel's of Greenfield – Gnomes Wall Quilt. **Other stuff:** Gypsy Quilter: ABC 123 Cool Pins; Dritz – cone thread adapters, hand needle and threader kit, sewing tool set, measuring tool set; Deb Tucker: Tucker Trimmer I and II rulers; Studio 180 Designs - Star 60 ruler; Larger wooden embroidery/quilting hoops – 14", 16" and 18". Weeks Dye Works – Cross stitch fabric 36 count Tin Roof linen (hand dyed). **Quilting Fabric:** Riley Blake – Springtime, Ride the Range, Calico + fat quarter bundles and 10" x 10" packs, Fall Barn Quilt and My Mind's Eye fat quarters; Studio E – Beneath the Stars; Freckle and Lollie – Spring Holiday; Oasis – Flower Garden, Nature's Palette Leaves; Henry Glass – House on Summer Hill.

QUILTING: Tiger Lily Press: Jelly Roll Runner, Rock n' Jelly Roll; **Quilt Addict Anonymous:** Hillside; **Busy Hands Quilts:** Easy Bargello; **Kitchen Table Quilting:** The Luna Quilt; **Sweet Tea Girls:** Warp & Weft; **Black Cat:** Jelly Bargelly; **It's Sew Emma:** Trifles; **Tourmaline & Thyme:** Vibrant Violets; **Cool Cat Creations:** Bali Bags.

CROSS STITCH: Little House Needlework: Loveable Petites, Snowy Petites; **Just Nan:** Gingerbread Peace Mouse, Christmas Doves Mini Needle Slide; **Country Cottage Needleworks:** Big City Christmas Department Store & Theatre; **Cottage Garden Samplings:** Snowman Collector #2 The Clown; **Blackbird Designs:** When Leaves Fall; **Homespun Elegance:** Come Home; **Little Stitch Girl:** Probably Haunted; **Rosewood Manor:** Blue Rhapsody; **Imaginating:** Christmas Countdown; **Heart in Hand:** Doodles Christmas, Winter White Whirligig, Tweetharts; **Primrose Cottage Quilts and Stitches:** Christmas Alphabet, Snowman Kisses; **Jardin Prive:** Quaker de l'Hiver, Quaker de l'Automne, Quaker de l'Ete, Quaker Du Printemps; **Shepherd's Bush:** Winter Bag; **Twin Peak Primitives:** 2023 Red Smalls; **Carriage House Samplings:** Christmas Time, Ebb and Flow, Garden Sampler; **The Blue Flower:** Seasons of the Heart Winter; **Heartstring Samplery:** Love & Joy; **Sue Hillis:** Hoop De Doo - Give Thanks and Snow Bring it On; **Little Robin Designs:** Halloween Feather Tree; **Plum Street Samplers:** Cardinal Kin. Grace Doth Abound, Autumn Cottage, Hello Winter; **Cotton Pixels:** Noel Christmas Tree Ball; **Tiny Modernist:** Mouse's Laundry Day, Rustic Winter; **Mirabilia:** Portrait Queen, Nightingale; **It's Sew Emma:** Type FACES – Rudolph, Frosty & Santa Claus; **Shannon Christine:** Autumn Favorites, Autumn Farm; **With Needle and Thread:** Maker and Mender, Santa Stops Here, Rudolph & Friends; **Luminous Fiber Arts:** Mousecapades 5 – Filling Santa's Bag & 6 – Trimming the Tree; **Little Dove Designs:** New Baby, Hearts of Autumn and Winter, Kaleidoscope of Butterflies; **Filigram:** Christmas Ornaments; **Cherry Hill Stitchery:** Let It Snow, Jingle Bell Sleigh Ride Co.; **Long Dog:** Before I Sleep; **Stoney Creek:** Haunted Haven; **Pansy Patch Quilts and Stitchery:** Betsy's Autumn Basket, Bluebirds and Bluebells Sampler and Smalls; **The Calico Confectionery:** Wicked, Sammy's 4th, Liberty Sampler, Seasonal Cats- Flag Holder, Spring Gatherer, Jingle; **Autumn Lane Stitchery:** Hocus Pocus, The Lunar Witch, Give Thanks, Hallows' Eve Haunting, Midnight Ride, Halloween Gnomies, Smell My Feet, Valentine Gnomies.

Happy Stitching! *Karol*

NEWSLETTER SUBSCRIPTION REMINDER:

Please note the date on your mailing label. Your subscription will expire a year after that date unless you let me know you would like to keep receiving the newsletter. Please keep me advised of any address changes, as well. Thank you!

Newsletter Delivery: If you would prefer an email when it is posted on our web site rather than receiving a mailed copy – save paper and postage. Go to our web site and sign up through Mail Chimp. You can send me an email to tell me you have switched to an email version so I can take you off the mailed version list. We do not share or sell any of our customers' contact information.

Fiberworks
108 E Bremer Ave
Waverly, IA 50677

**STANDARD
PRESORT
U.S. POSTAGE
PERMIT #37**

Return Service Requested

**Football Sunday
February 12 from 12-4**



Snowflake - 2001 Needle Roll

Design Area: 61 high by 39 wide

Stitching Instructions:

Model is stitched on 28 count Navy Linen #76-98 from Wichelt Imports. Attach Mill Hill Magnificia Beads # 10046 at the heart symbols.

Sources:

Mill Hill/ Gay Bowles Sales Inc.

(608)754-0665

The Thread Gatherer (208)387-2641

Wichelt Imports (800) 356-9516

Band A is a Satin Stitch Square. Use 2

ply of the Snow Drift White Silk 'N Col-
ors. Or white thread of your choice.

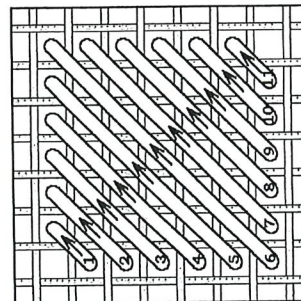
Band B is a Smyrna Cross

The diagrams are shown over one thread.

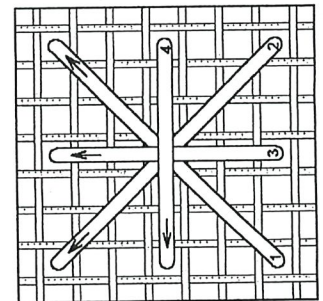
The large chart is over 2 threads.

Follow the large chart for placement.

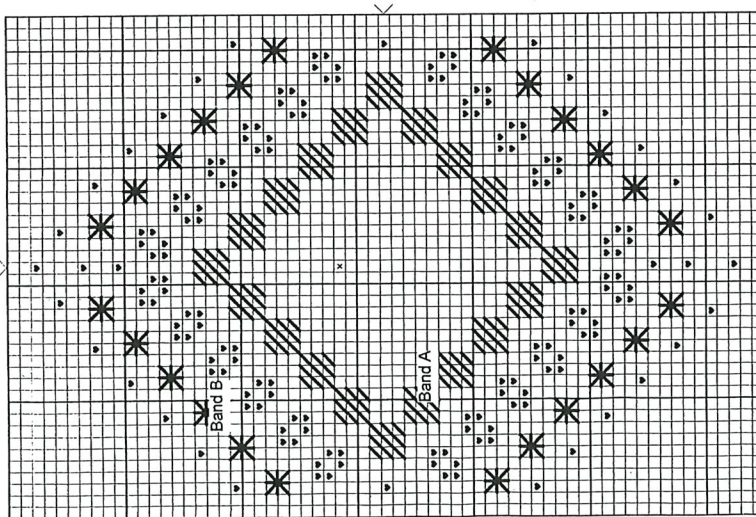
Finishing Instructions: Attach the treas-
ure # 12039 from Mill Hill at the x in the
center.



**Band A
Satin
Stitch**



**Square
Band B
Smyrna
Cross**



©2001 Forever In My Heart
This design may be reprinted for newsletter or handout.



**Forever
In My
Heart**

Designs by:

Lynda Orme and Wendy Peatross
2884 Newman Drive 1425 Lowell Drive
Idaho Falls, ID 83402 Idaho Falls, ID 83402
(208)523-9414 (208)524-4283
Lyndadm@aol.com WTPdesigns@aol.com