

# FIBERWORKS - THE FLYING NEEDLE

April 2023

319-352-5464

Vol. 30 No. 3

Out of local area use 1-800-307-4103.

E-mail: [info@myfiberworks.com](mailto:info@myfiberworks.com) Web site: [www.myfiberworks.com](http://www.myfiberworks.com)

**Love to Shop Hop Trail:** It's almost time! The dates for our spring hop are April 12-15. Five shops are again participating Fiberworks Needlework Shop in Waverly; Crazy to Quilt and Lulijune's in Cedar Falls, River Valley Fabrics in Clarksville, and Jen's Needlework in Aplington. Pick up a passport at your first stop, get it stamped at each store (with a purchase) and trade it for a cool "In the Beginning" jelly roll at the last stop. Easily doable in a day so fill up the car and bring your fabric collector friends for a fun day out on the trail. Spend \$20 and get a coupon good in May for \$5.00 off another \$20 purchase,



## TECHNIQUE TIP: Yarn Weights

Want to change up the yarn that is called for in your pattern? Here are the standard yarn weights so you know what weight yarn to look for as a substitute. There should be a number in a skein shaped icon on the balls so you know what weight each ball is classified as. Here is the list:

- #0 = lace – fingering or crochet thread #10 with 000-1 size needles.
- #1 = superfine – baby, fingering or sock yarn with recommended needle size 1-3.
- #2 = is fine – baby or sport with needles 3-5.
- #3 = light – DK, light and worsted with needle 5-7.
- #4 = medium – afghan, Aran or worsted using needles 7-8.
- #5 = bulky – chunky, craft and rug with needles 9-11.
- #6 = super bulky – bulky and roving using needles 11-17.
- #7 = Jumbo – jumbo and roving with needles 17 or bigger.

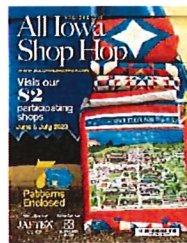
A hand symbol on larger weight yarns indicate they can be used for arm or hand knitting.

If you are making a wearable project, remember to knit a gauge sample to see if your tension matches the size needles you are using. This is usually a 4" stockinette stitch piece. Your pattern will tell you how many stitches high and wide it should be. If it is smaller, go up a size bigger needle and conversely, if it is too big go down a size. Be sure to buy all the skeins you need before you start as there can be a difference in color between dye lots. We do not have lots of yarn in stock but can order other kinds if you know what you want. That way we can get the color you want and the amount you need. The labels will also suggest a hook size for crochet and list fiber content, care instructions, ounces/grams and meters/yards.



**Monthly sale May 16-20:** 20% off all in stock frames. It is time to completely finish off those pieces that you are done with the stitching part so you can give them away or enjoy them in your décor.

**All Iowa Shop Hop:** This event starts June 1<sup>st</sup> and goes through July 31<sup>st</sup> so you have two months to visit as many of the 82 participating stores in Iowa as you want. If you go to five shops you can send in your passport to enter prize drawings. The magazines are at the printers and should be arriving soon. Your passport, store maps and hour listings, interesting articles and seven patterns using the limited-edition fabrics made especially for the hop are included in this publication. Call to reserve your copy or stop in to see what the fabrics look like this year. The theme is Iowa State Fair with a panel and several coordinates. You can reserve fabric amounts now for pickup at start.



**We wish everyone a blessed Easter and Passover season!**



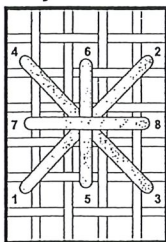
Thank you to: Earth Threads and Stitches By Cheri for their complimentary patterns.

Riley Blake is offering a new monthly series starting in January 2024 of door banners. Each is approximately 20" x 36" finished. Kits include the pattern, and fabric for the front and binding packaged in a reusable box. If you sign up for these it is for all 12. Estimated price is \$40.00 per month for all or \$45.00 for pick and choose if you don't sign up., If I have enough interest, I need to order by July 1<sup>st</sup>. Please let me know if you are interested.

*Door Banner of the Month - Let me know if you are interested*

<p><i>April - Happy Easter</i></p> 	<p><i>May - May in Bloom</i></p> 	<p><i>October - Hello Grounds</i></p> 	<p><i>November - Autumn Leaves</i></p> 
<p><i>June - Sweet Summer</i></p> 	<p><i>July - Patriotic Dreams</i></p> 	<p><i>December - Christmas Eve</i></p> 	<p><i>January - Sweet, Snowman</i></p> 
<p><i>August - One in a Million</i></p> 	<p><i>September - Back To School</i></p> 	<p><i>February - All My Love</i></p> 	<p><i>March - Feeling Lucky</i></p> 

### Smyrna Cross



This pattern can be reproduced.

Design by:

Earth Threads  
Betsy C. Stinner  
22 Boltwood Avenue  
Castleton, NY 12033  
(518) 732-4293

Visit our web site @ [www.earththreads.com](http://www.earththreads.com)

### Arbor Day

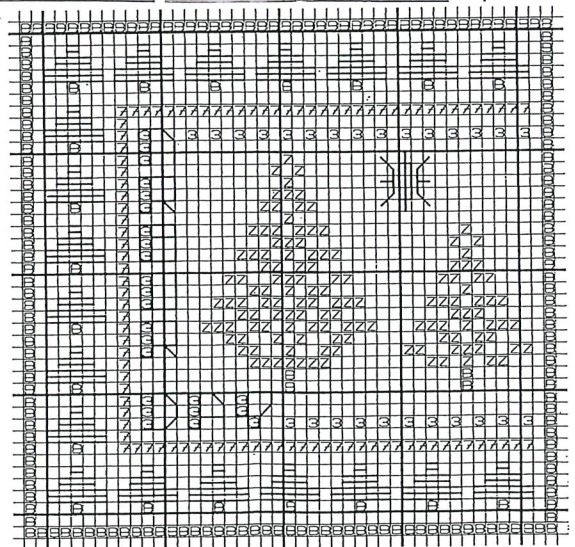
Model stitched on #32 count Belfast linen  
by Zweigart.

Model measures 45 stitches horizontally  
and 42 stitches vertically.

#### Threads: DMC

Symbol	Number	Color
3	972	Bright yellow
7	339	Orange
8	839	Brown
Z	500	Dark green

**Directions:** Cross stitch over two threads using two strands of floss. Each block on your chart equals two threads on your ground fabric. Stitch diagram done over one thread. For Satin stitch use three strands of floss. For Back stitch use one strand of floss. For specialty stitch use two strands of floss.



Instructions continued on Page 3



WHAT'S NEW!

**Kits:** Mill Hill – Kitty Love, Puppy Love, Little Llama, Love Cooking ornaments. Button and Beaded kit Koi Pond, Curly Girl Home is a Shelter and Simple Act; Riley Blake – Calico Birds and Springtime Sweet Row quilt kits; Shepherd's Bush – Flowers for Ewe, Where We Dwell, Sweet Land Sampler, Kind Hearts, Liberty Bag; Benartex – Needlestars – Going Up quilt kit; Bareroot Patterns: Dish towel kits (embroidery) Rise & Shine, Happy Campers, Fresh Picked, Chase Your Dreams (bike). **Other stuff:** June Tailor: Quilter's Cut & Press I; It's Sew Emma – the Unstitcher; Martelli – seam guides; Lacis: Needle Tool (threader); Riley Blake – Calico enamel tin mugs by Lori Holt; Thermo Web – Peel N Stick Ruler Tape; Classic Colorworks floss – Cottage Daisies, Priscilla's Peppermint, Fields of Green, Storm Lake Sunrise; Weeks Dye Works floss – Apple Pucker, Chia, Mountain Mist, Winnie B Blue, Sun Dried. **Quilting Fabric:** Riley Blake – Bright Stars from Teresa Kogut, Wideback Shade in Snow color; Studio E – Data Point with computer cables and circuits; Camelot – Bugs Bunny, Sylvester & Tweety, Looney Tune; 3 Wishes – Locally Grown; Benartex – For the Love of Coffee; Freckle and Lollie – Belle & Blue (unicorns), Bow Wow Meow.

**QUILTING:** **Vanilla House:** Artsy Purse; **Blackbird Designs:** In Full Bloom; **Tiger Lily Press:** Greased Lightning (we used this one for the hop model); **It's Sew Emma:** Summer Memories.

**CROSS STITCH:** **Little House Needlework:** Bumblebee Petites; **Just Nan:** Frosty Gnomes, Winter Rose; **Country Cottage Needleworks:** Big City Christmas Street Scene & Hotel; **Cottage Garden Samplings:** Snowman Collector #3 The Shepherd, #4 The Postman, #5 The Scarecrow; **Blackbird Designs:** United We Stand, Birds of a Feather; **Shakespeares's Peddler:** M. Satterthwaite 1807 a Quaker Style Samper; **Erin Elizabeth Designs:** A Type of Christmas, A Type of Christmas Rudolph and Snow, Sweater Joy Blocks, Nuts 4 Christmas; **Annabelle's Needleart:** Wonderful Winter, All Things Halloween, America My Home Sweet Home; **Imaginating:** Let's Eat Chocolate; **Heart in Hand:** new Tiny Town and more arriving soon; **Aury TM:** Strength Quaker Style; **Jeannette Douglas Designs:** Tapestry of Stitches; **Shepherd's Bush:** Spring Bag; **Twin Peak Primitives:** 2023 St. Patrick's Day Smalls; **Rosewood Manor:** Very Merry Trees; **Hands On Designs:** Snow on the Ground, Mad For Plaid, Winter Baskets; **It's Sew Emma:** Stackable January and February, You Are the Boss; **Luminous Fiber Arts:** Mousecapades 7 – Happy Christmas; **Little Dove Designs:** Christmas Wishes; **Stoney Creek:** Sleepy Santa Stocking, Winter 2023 issue magazine.

Many more new ones are on their way!

Happy Stitching! *Karol*

**Specific Directions:**

**Trees on border:** Satin stitch as indicated on chart with 500.

**Words:** Cross stitch as indicated on chart then Back stitch as indicated on chart with 839.

**Dots to right of words:** Smyrna Cross over two with 972.

**Sun:** Satin stitch with 339. Back stitch in same color as indicated on chart. I have put a break line at top and bottom of sun so that you could see where the Satin stitch ends and where the Back stitch begins.

# NEWSLETTER SUBSCRIPTION REMINDER:

Please note the date on your mailing label. Your subscription will expire a year after that date unless you let me know you would like to keep receiving the newsletter. Please keep me advised of any address changes, as well. Thank you!  
**Newsletter Delivery:** If you would prefer an email when it is posted on our web site rather than receiving a mailed copy – save paper and postage. Go to our web site and sign up through Mail Chimp. You can send me an email to tell me you have switched to an email version so I can take you off the mailed version list. We do not share or sell any of our customers' contact information.

Fiberworks  
 108 E Bremer Ave  
 Waverly, IA 50677

STANDARD  
 PRESORT  
 U.S. POSTAGE  
 PERMIT #37

Return Service Requested

Love to Shop Hop Trail  
 April 12-15



28 ct. Cashel Linen,  
 Antique Ivory

♥ 221	DMC	Anchor
○ 520		
■ 640		
25 x 838		
/ 1 strand each		
640 and 838		

47 x 60 . 3.35 x 4.21

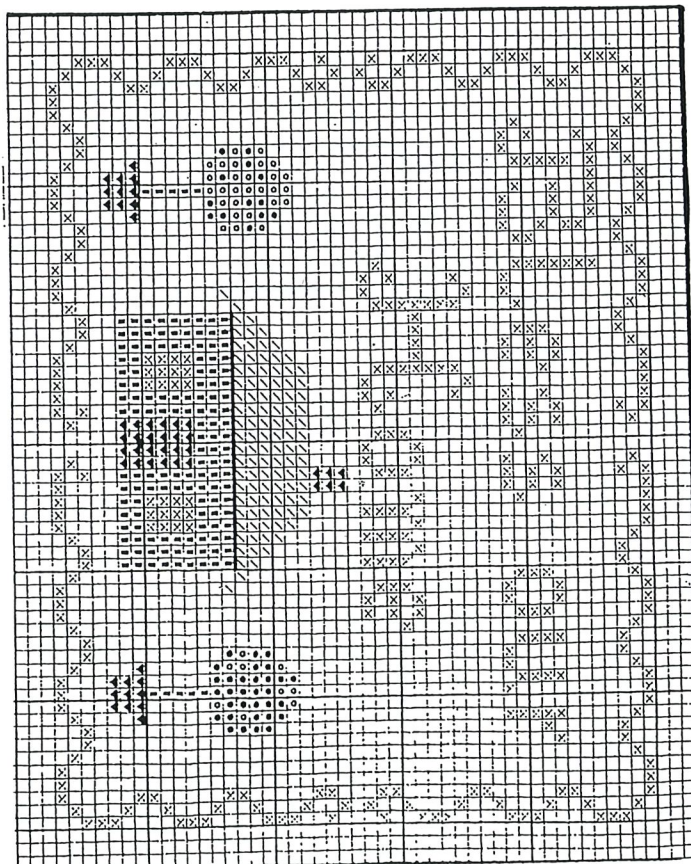
This design will fit a 4 x 5 frame,  
 or may be completed as a  
 pillow, with or without ties.

Stitches By Cheri  
 Waukesha, WI. 53188  
 (414) 547-1339

FIBERWORKS  
 Waverly, IA

This pattern may be reproduced  
 with permission of Stitches By Cheri,  
 for free distribution only. Cannot be  
 sold.

1997 ©



Stitches By Cheri