

FIBERWORKS - THE FLYING NEEDLE

January/February 2024

319-352-5464

Vol. 31 No. 2

Out of local area use 1-800-307-4103.

E-mail: info@myfiberworks.com Web site: www.myfiberworks.com



Football Sunday: Coming soon on February 11th we will be open from 12-4 with all in-stock items 25% off. You have time to score the bargains and still be home in time to watch the big game. Don't pass on this play!



TECHNIQUE TIP: Cutting Mat Care

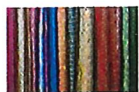
A little care for your self-healing cutting mats will help them last longer. A new one can be quite an investment. The most available sizes are 6" x 9", 12" x 18", 18" x 24" and 24" x 36" and costs run from \$8.60 for the smallest one to \$70 for the largest one so you want to take care of your mat. There are some that rotate to make cutting easier and these are 8", 14" and 24" round and 17" square priced at \$28.50 - \$130 depending, again, on the size. If you need a larger mat, there is one that totals 35" x 70" which comes in three pieces and clips together for easier shipping and handling (\$234). Always use a mat to protect your table surface when using a rotary cutter. Remember to store mats flat when you are not using them. A place is under your bed or a couch works good. You can also store them vertically flat by using a pants hanger with a clamp or some of the newer mats have a hole in them to hang on a hook. Do not leave them in a hot or cold car or in direct sunlight. And don't use it as an ironing surface. Once a mat warps, it cannot be made flat again. Cut in different spots on your mat to avoid making a groove from many cuts in the same location. If a groove develops, it will make your cut less accurate and dull your rotary blade. Keep your cutting surface free from pins, needles, fabric or other items you don't want cut. If fibers have become imbedded into your cutting mat, use a lint roller or heavy tape to remove them. An art gum eraser can help remove them, too. For plush or cotton batting turn the mat over and use the un-gridded side to cut. Thank you to Olfa.com for their helpful hints.

March 19-23 Sale: To celebrate the arrival of spring, anything in stock with flowers on it will be 25% off.



Spring Shop Hop: Mark your calendars for the Love to Shop Hop Trail on April 10-13. The same five shops will be participating as last fall: Fiberworks in Waverly, Jen's Needlework in Aplington, River Valley in Clarksville, Crazy to

Quilt and LuliJune's in Cedar Falls. There will be coupons for you to use at each stop with your passport. Trade your stamped passport in at your last stop for a multi-colored jelly roll of tone on tone fabrics designed by Jason Yenter for In The Beginning fabrics.



All Iowa Shop Hop: This event will take place both months of June and July as it did last year. The featured fabric this year will be Island Batiks. Pictures coming in the next newsletter.

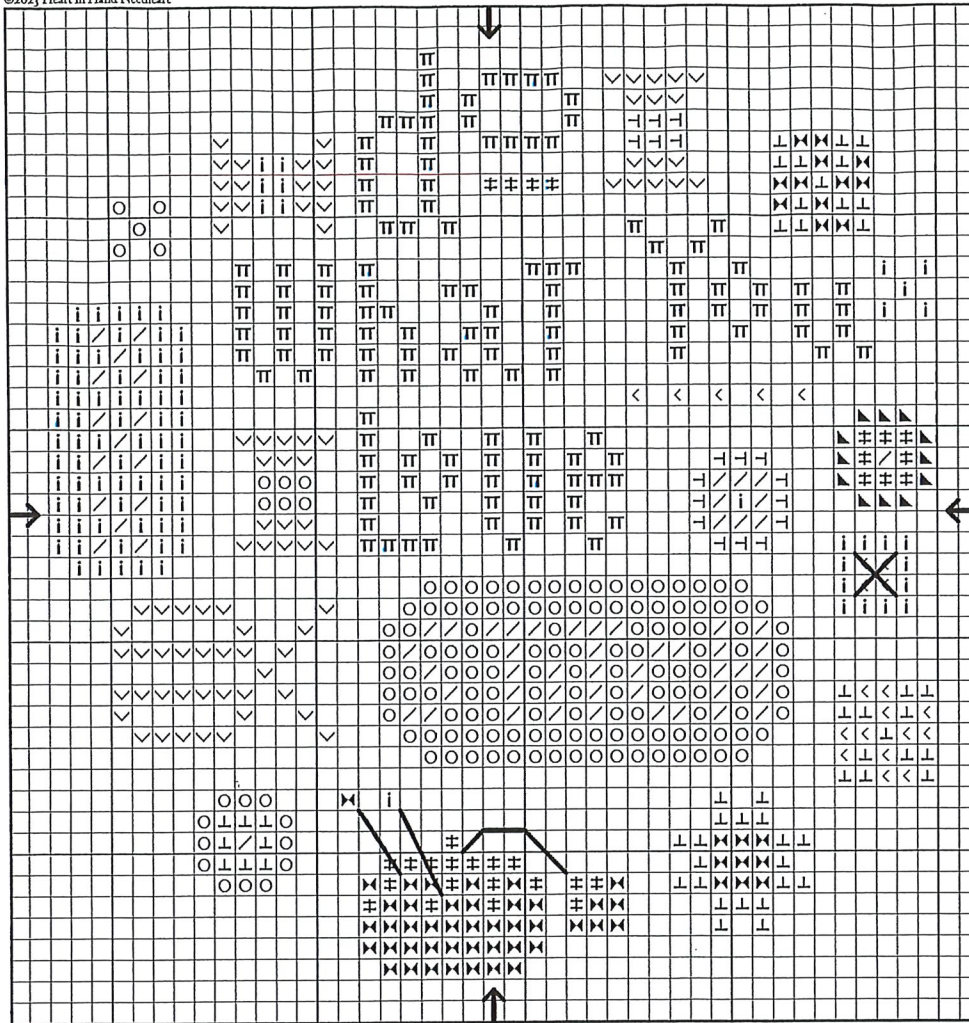
Door Banner of the Month:

The first kit has finally arrived and is ready to pick up for those who have signed up for the series. We do have two fabrics to choose from for the backing if you want some that is used on the front for 10% off if you are doing every month. We have the first two pieced together so you can see what they look like.



Thank you to: Heart in Hand and Tiny Modernist for the complimentary patterns.

©2023 Heart in Hand Needleart



Heart in Hand Needleart logo trademark of Cecilia Turner. Do What You Love ©2023 Heart in Hand Needleart. This Design may be reprinted for newsletters and handouts.

www.heartinhand.com
email: hihn@aol.com

sources provided by

Antique Lace linen,
32 count
Seraphim Fabrics

Classic Colorworks Thread

Weeks Dye Works Thread

Heartware Bowls
Heart in Hand Needleart
email: hihn@aol.com

Ric Rac Trim
Country Rust
Lady Dot Creates

Finishing
Joy Hayward
Finely Finished

do what you love Designer Cecilia Turner

Code	Classic Colorworks	
12	Grain	712
11	Blue Corn	930
10	Cherry Cobbler	221
9	Chesapeake Bay	931
8	English Ivy	936
7	Little Sprout	988
6	Pebble Beach	3032
5	Sticks and Twigs	3787
4	Tennessee Red Clay	3722
3	Ye Olde Gold	3045
	Weeks Dye Works	
1	Hibiscus	761

Model stitched on 32 count
Antique Lace linen over 2
threads with 2 threads Classic
Colorworks and Weeks Dye
Works thread.
Backstitching: Strawberry
stem in 2 strands Little
Sprout, Pins in 1 strand Sticks
and Twigs
Large cross stitch over 4 in
center of blue button in 2
strands 12-Grain.

Stitch Count 43w x 44h
Approximate Design Size
2.7 x 2.7 in.



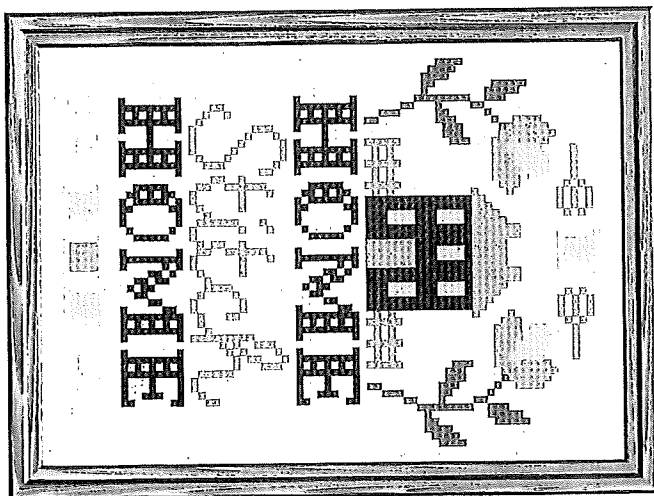
Do What You Love is sized to fit as a lid on a Cream Heartware Bowl. Finishing directions for Heartware lids are available for free download at <https://www.heartinhand.com/designs/heartware-bowl-lid-finishin.pdf>

WHAT'S NEW!

Kits: Riley Blake – Door Banner for April, Wilmington – Checkpoint 46" x 46" in blue kits; Circles and Stitch – Wool pincushions; Bent Creek – Candy Corn of Mischief, Candy Cane of Christmas, Snowman of Snowflakes kits; Diamond Dot Art – easy kits; Val's Stuff – A Joyful Hollyday double ornament kit; Mill Hill kits – Sticks: Be Inspired, Be Amazing, Be A Friend, Just Be; Maywood – Sweet Dreams Quilt Kit. **Other stuff:** Dress It Up – buttons Blizzard, Olde Fashioned Lights, Christmas Eve, Christmas Joy; Needle keeper magnets – Les Petite Croiz de Lucia Halloween things, Sewing Machine; Shaped 100% beeswax – Swan, Shell, Cameo; Lori Holt – Farm Fresh Floss Drops, Burlap plaid project bag; Creative Grids Rulers – Skinny 10" Curvy Log Cabin, 60 Degree Triangle 8 1/2", Curvy Log Cabin Trim Toll 6". **Counted Cross stitch fabrics:** Needle Bling Designs - hand dyed 32 count Shrekie's Tan. & Pumpkin Pie and 36 count Cookie Dough; Legacy Linen – 30 count Pecan Shortbread; Zweigart – 14 and 18 count Light Mocha, 18 count Vintage Grey, 32 count Lugana Sahara Dust; Newcastle linen 40 count Silver Moon/Alabaster; Permin Aida – 14 count Nordic Blue. **Quilting Fabric:** Riley Blake – Lights On Cats, Stitches and Granny - white on whites, Sykel – Hawkeye Tailgate Banner (back in).

CROSS STITCH: The Blue Flower: 12 Cats of Christmas, 12 Dogs of Christmas; **Just Nan:** Gingerbread Peace Mouse, Glory Bee Mouse, Christmas Snowfall Biscornu; **Country Cottage Needleworks:** Beach Boardwalk series Snack Shop, Pastel Collection ornaments 1 & 2 Christmas House and Nutcracker Trio; **Cottage Garden Samplings:** Fabulous Houses ! & 2 Santa's House and Castle; **Anabella's:** Simple Sampler Merry Christmas; **It's So Emma:** Chicken Club #10 Penny and #11 Pearl, ; **Blueberry Ridge:** Sampler Seasons: Winter; **Hands On Designs:** Enjoy the Stitch, Pere Noel, The Tree Lot, Homestead Gathering; **Jeannette Douglas Designs:** European Christmas Box; **Jardin Prive:** Happy Halloween Pumpkin Party, Dame Nature de L'Hiver; **Pansy Patch Quilts and Stitchery:** Betsy's Christmas Basket; **Primrose Cottage:** Christmas Quaker; **Shepherd's Bush:** Marie's Stocking, Dashing Through The Snow, Thanksgiving Bag; **Stoney Creek:** Winter 2024 magazine (on the way); **Annie's Cross-Stitch:** Year-Round Cross Stitch Ornaments; **Blackbird Designs:** Winter Wonderland (reprint); **Lila's Studio:** Autumn Is Joyful; **Madame Chantilly:** Christmas..

Happy Stitching! *Karol*



X = Cross Stitch (Use 2 strands)
BS = Back Stitch (Use 1 strand)

X	BS	DMC	Anchor
II		Ecru	387
f		3855	311
↑		3854	313
2		3347	266
□		3848	1074

Fabric Design Size
14-ct 3.9" x 5.4"
16-ct 3.4" x 4.8"
Stitch Count: 54w x 76h
Stitches used: Cross Stitch, Back Stitch

Complimentary Counted Cross Stitch Pattern
tinymodernist

02/24

NEWSLETTER SUBSCRIPTION REMINDER:

Please note the date on your mailing label. Your subscription will expire a year after that date unless you let me know you would like to keep receiving the newsletter. Please keep me advised of any address changes, as well. Thank you!

Newsletter Delivery: If you would prefer an email when it is posted on our web site rather than receiving a mailed copy – save paper and postage. Go to our web site and sign up through Mail Chimp. You can send me an email to tell me you have switched to an email version so I can take you off the mailed version list. We do not share or sell any of our customers' contact information.

Fiberworks
108 E Bremer Ave
Waverly, IA 50677

Super Football Sunday
February 11 = 12-4

**STANDARD
PRESORT
U.S. POSTAGE
PERMIT #37**

Return Service Requested

